

Hush Blocks
SimpleSpec 300.43™

Installation
Manual



Table of Contents

3 Overview

- 3 Overview
- 3 Available Size and Shapes

5 Installation

12 Design Starters

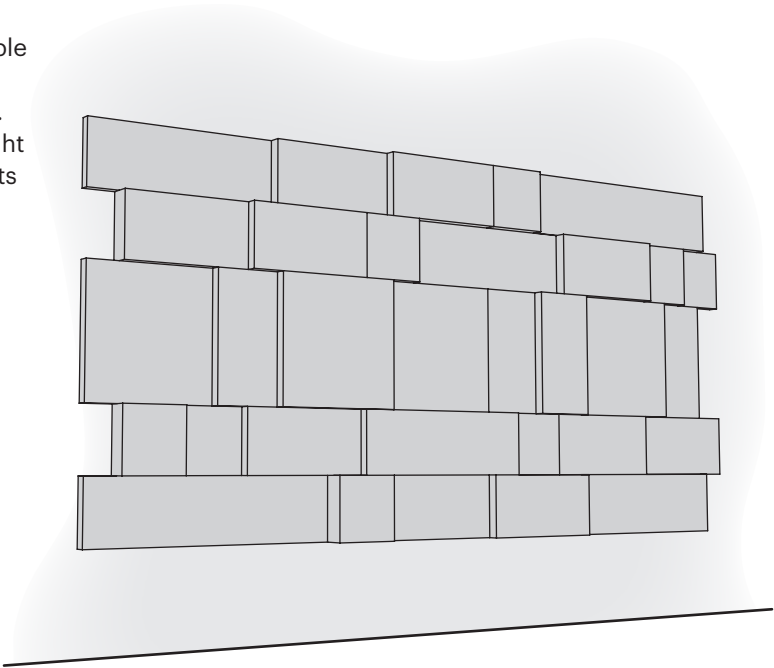
- 13 2" Depth - Pixel
- 14 2" Depth - Stencil
- 15 2" Depth - Ripple
- 16 2" Depth - Braid
- 17 2" Depth - Rhythm
- 18 2" Depth - Fractal
- 19 Various Depths - Stipple
- 20 Various Depths - Ledge
- 21 Various Depths - Magna
- 22 Various Depths - Impasto
- 23 Various Depths - Amp
- 24 Various Depths - Flux

25 Product Description and Specifications

Overview

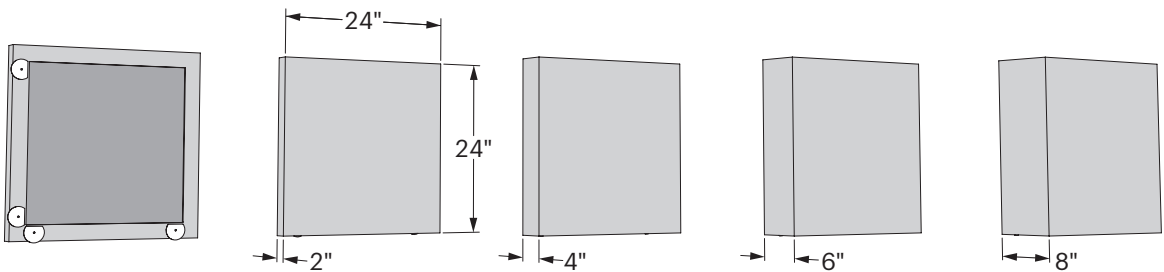
Create a private space, contain sound, and build a more comfortable environment with this absorptive, wall mounted, modular tile system. Hush Blocks is a series of lightweight tiles made from Sola Felt and boasts an NRC rating ranging from 0.80 to 1.25. Use Hush Blocks to create unique features that will leave a lasting impression.

See our design starters on page 12. These are pre-configured layouts available to order.

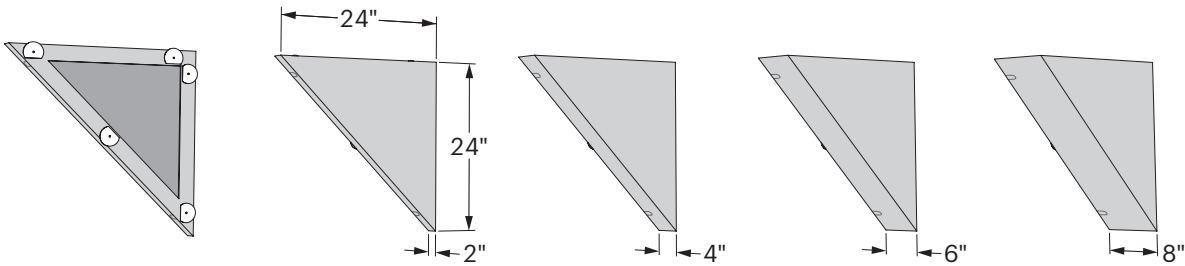


Available Sizes and Shapes

Hush Block 2'x2'

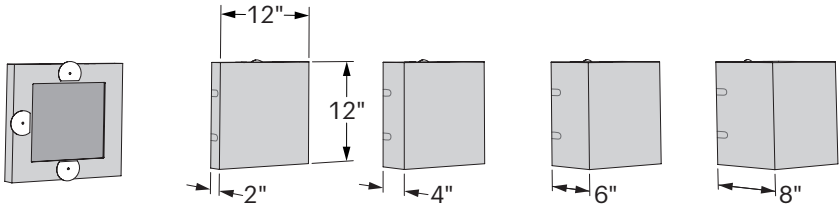


Hush Block Triangle 2'x2'

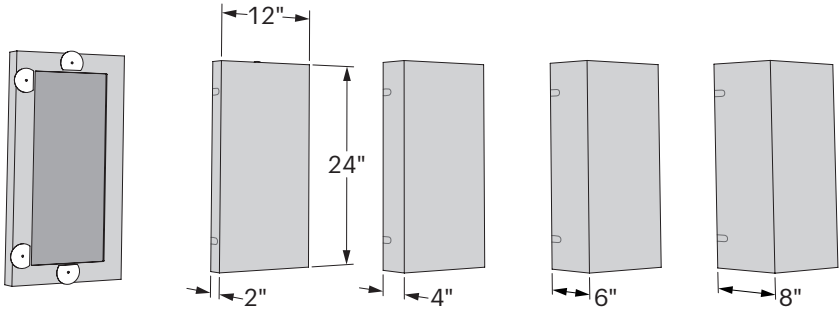


Available Sizes and Shapes

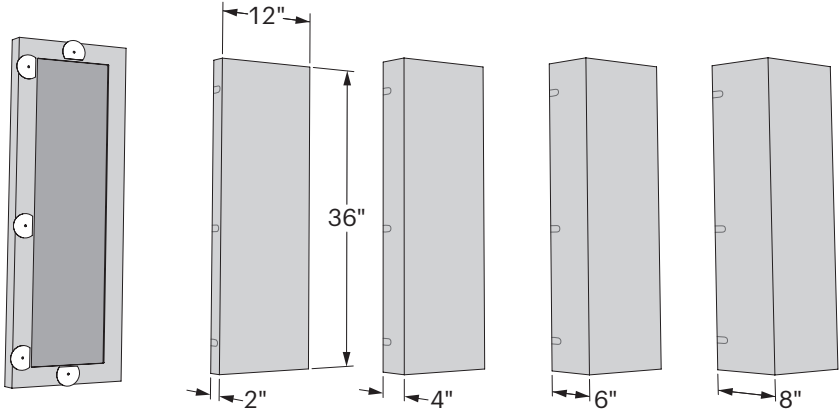
Hush Block 1'x1'



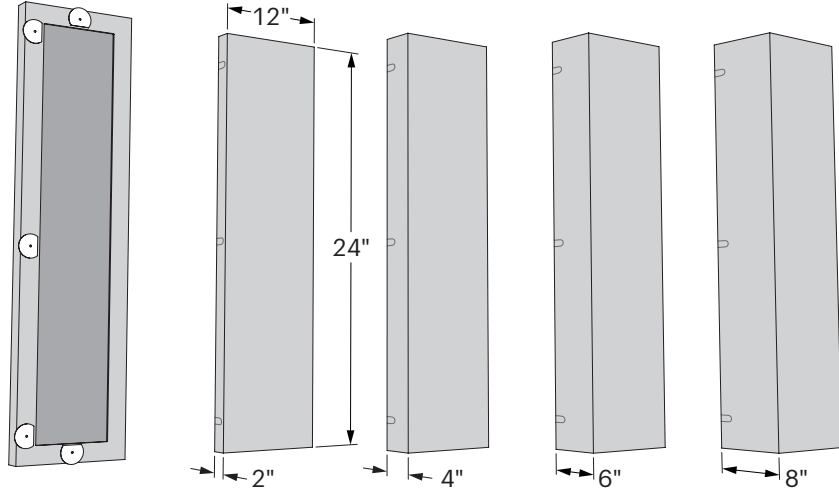
Hush Block 1'x2'



Hush Block 1'x3'

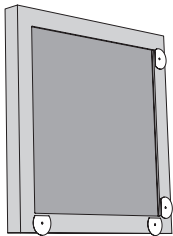
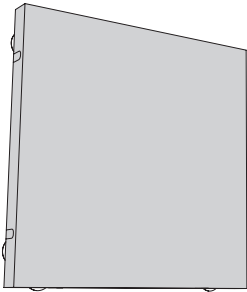


Hush Block 1'x4'



Installation

Contents Overview



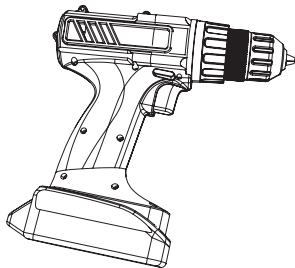
Hush Blocks

(Number, size and shape according to configuration)

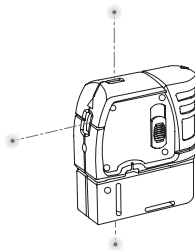


1 5/8" Drywall Screw
3-85-110

Required Tools



Drill



Laser Level



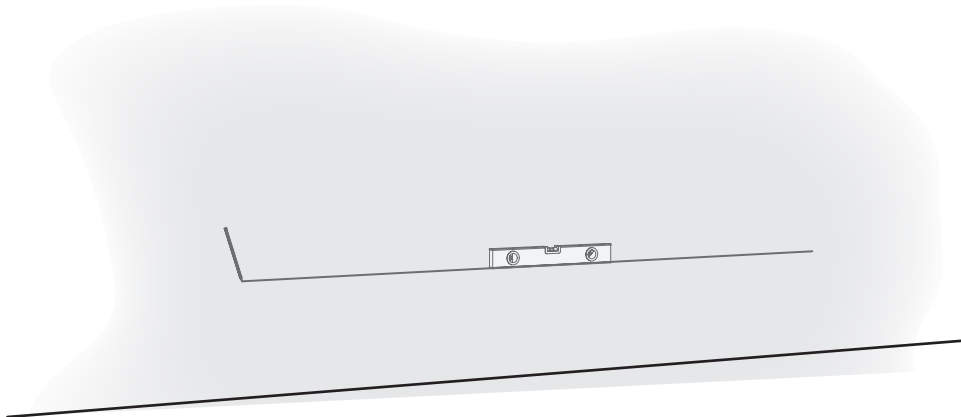
Pencil



PH2 Bit

1 Preparation

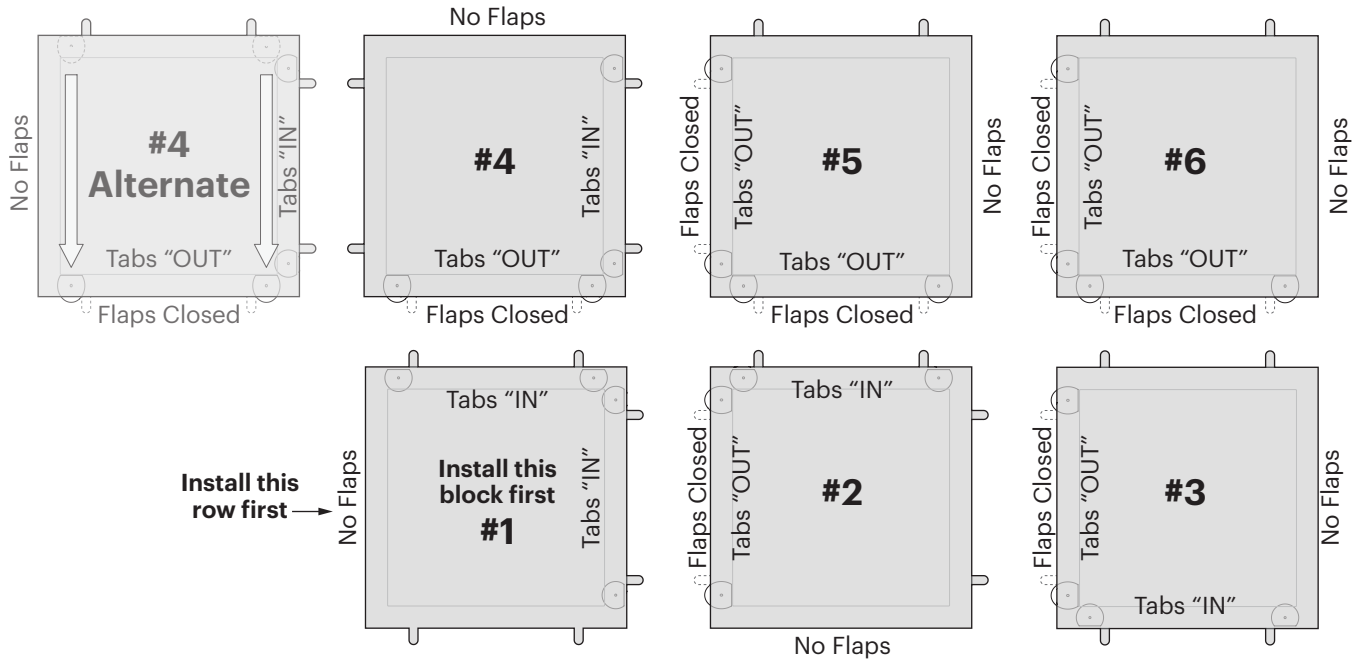
- a** Determine placement of Hush Block feature. Mark a level bottom line on the wall.



Installation

1 Preparation cont. . .

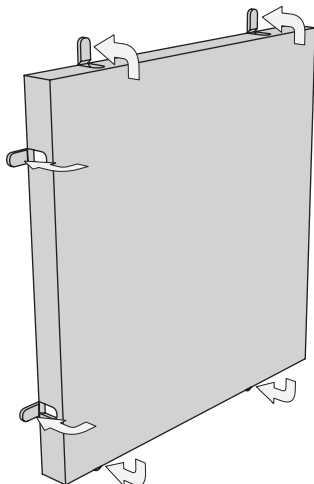
- b** Reference this diagram as you prepare the Hush Blocks for installation. Install starting at the bottom left corner (#1), installing the first row of blocks, then install additional rows starting from the left side.



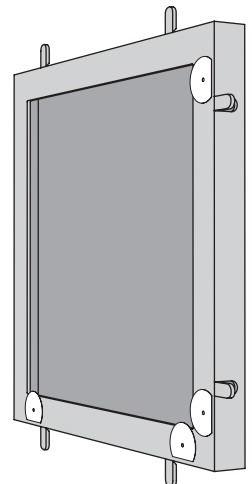
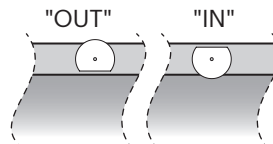
Note: If it is visually important to have no flaps showing on the sides of the system, rotate the first block on rows 2+ and relocate the steel stabs to the bottom (See #4 Alternate below).

2 Install First Hush Block

- a** Open the felt flaps on all (3) sides of the first Hush Block.



- b** Ensure that steel tabs are all rotated to the "in" position on the first Hush Block.



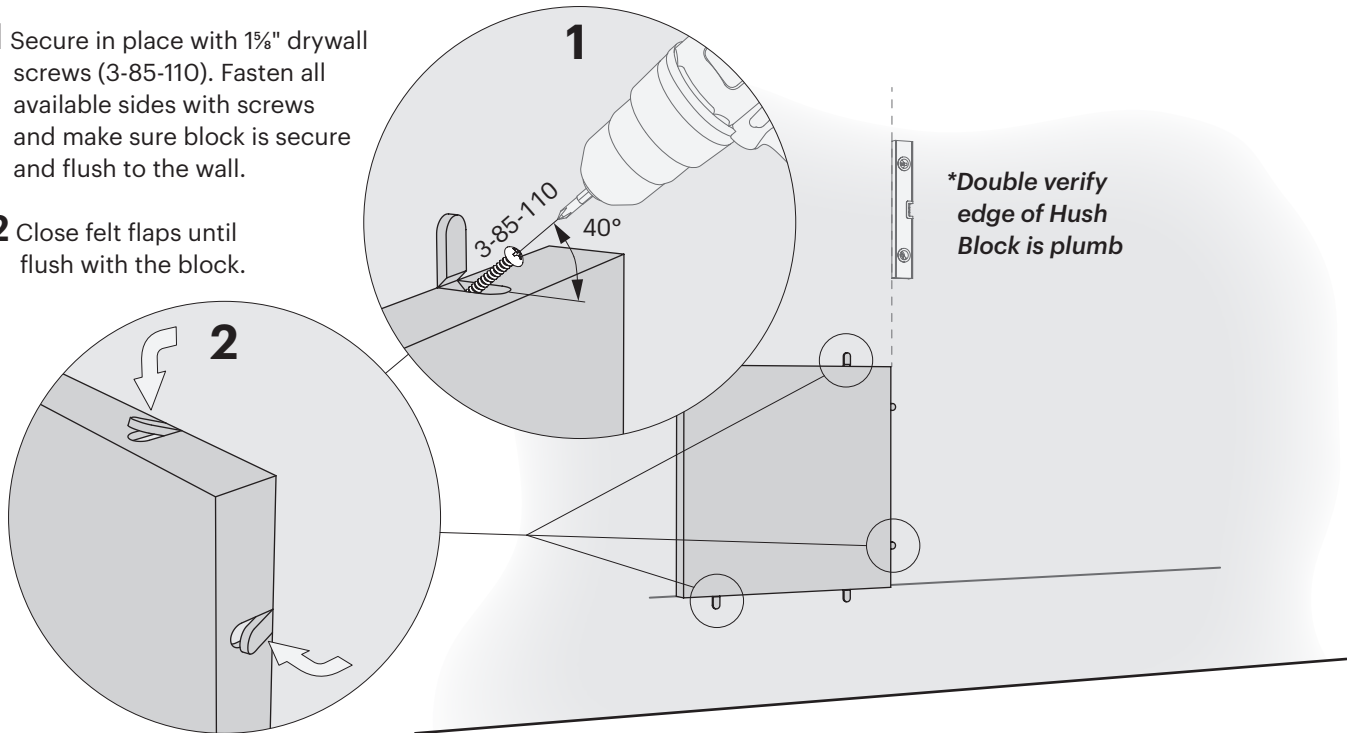
Installation

2 Install First Hush Block *cont.* . .

- C** Starting at the bottom left corner, position the block so the side without felt flaps is on the visible outside edge of the feature and the bottom of the block is even with the line drawn on the wall.

- 1** Secure in place with 1 $\frac{5}{8}$ " drywall screws (3-85-110). Fasten all available sides with screws and make sure block is secure and flush to the wall.

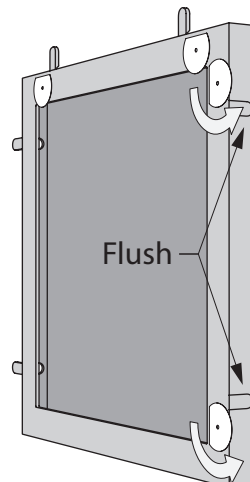
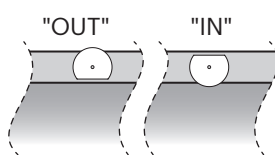
- 2** Close felt flaps until flush with the block.



3 Install Bottom Row of Hush Blocks

- a** To install the next block, rotate the steel tabs that will be adjacent to the first block you installed to the "out" position and ensure the other tabs are rotated to the "in" position.

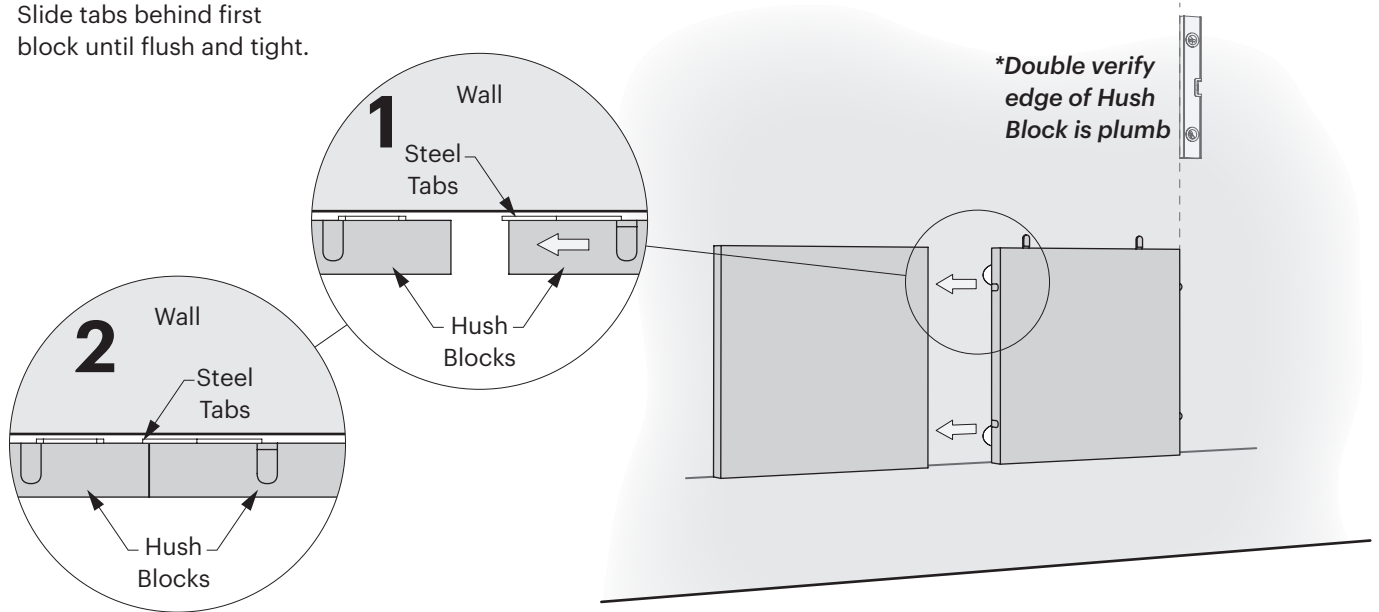
On the side where the steel tabs are "out", the felt flaps should be closed/flush. On the other sides the felt flaps should be open.



Installation

3 Install Bottom Row of Hush Blocks *cont...*

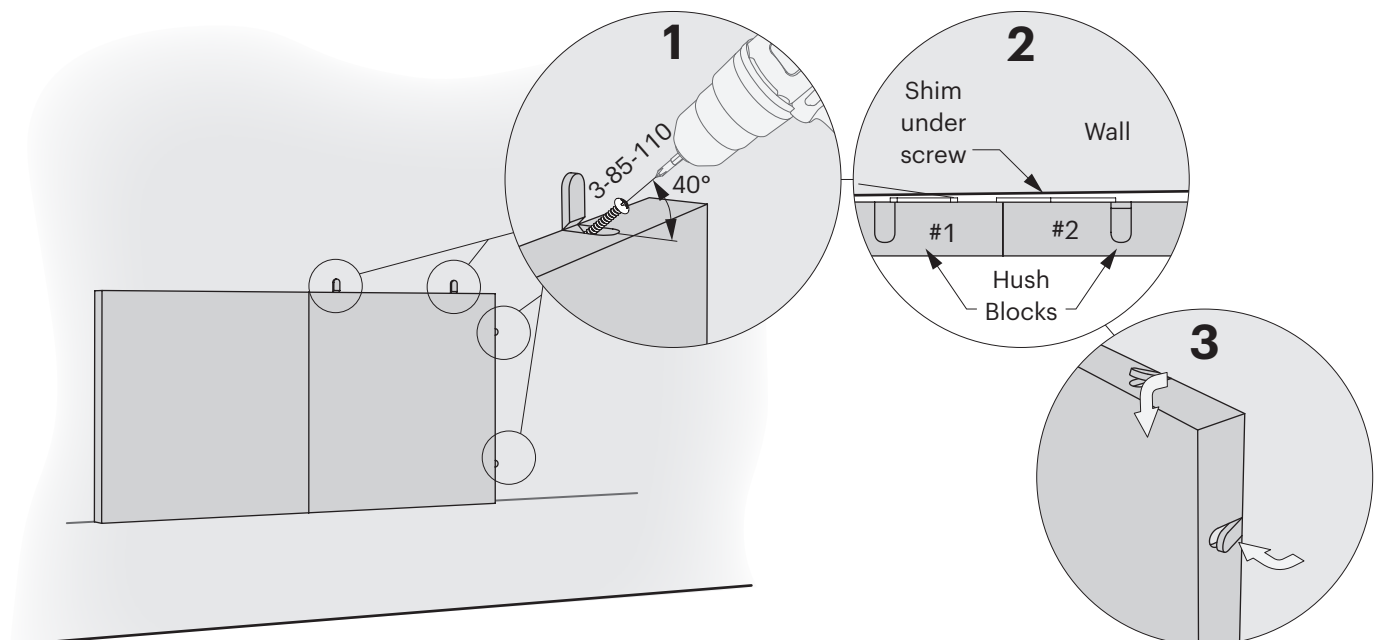
- b** Slide tabs behind first block until flush and tight.



- c** 1 Proceed to install drywall screws into all available openings.

- 2 Shim if necessary to make sure front faces of blocks are flush.

- 3 Close felt flaps until flush with the block.



Installation

3 Install Bottom Row of Hush Blocks *cont...*

- d** Repeat the same process for additional blocks on the bottom row.

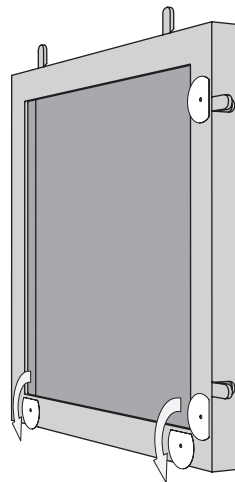
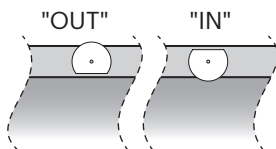
For best aesthetic appearance ensure the side without felt flaps is on the visible outside edge whenever possible. See diagram in Step 1.

Note: Important to check level and plumb with each new column. It is very easy for blocks to get out of alignment.

4 Install Remaining Hush Blocks

- a** Rotate the steel tabs on the bottom to the “out” position and ensure the other tabs are rotated to the “in” position.

On the bottom the felt flaps should be closed/flush. On the other sides the felt flaps should be open.

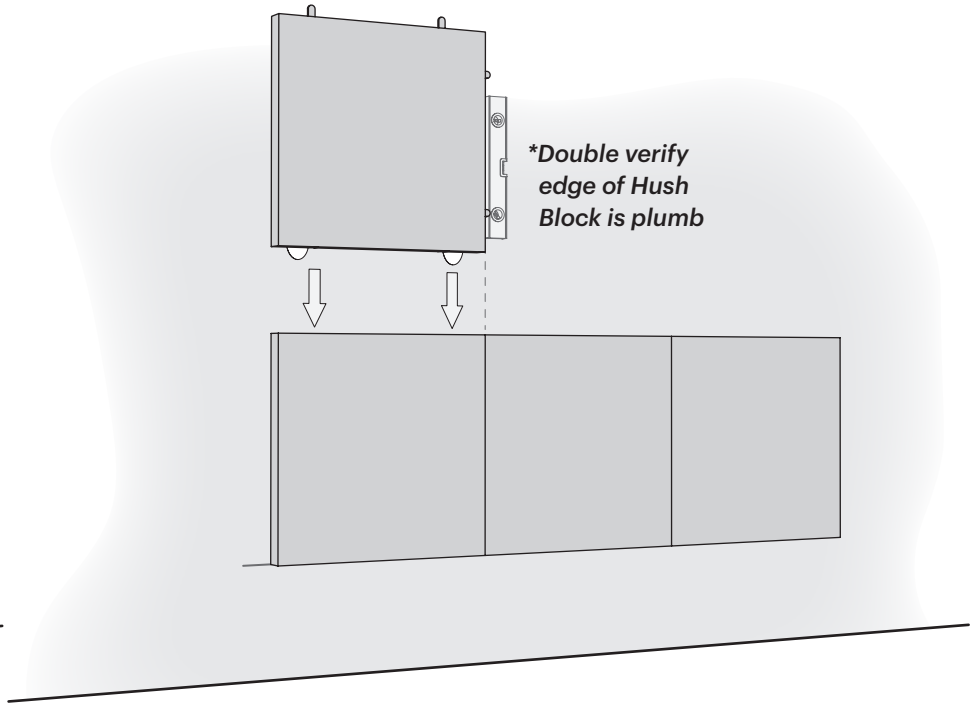
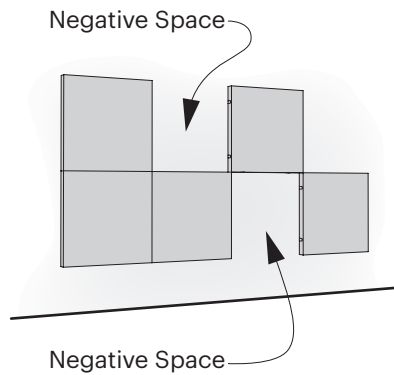


Installation

4 Install Remaining Hush Blocks *cont...*

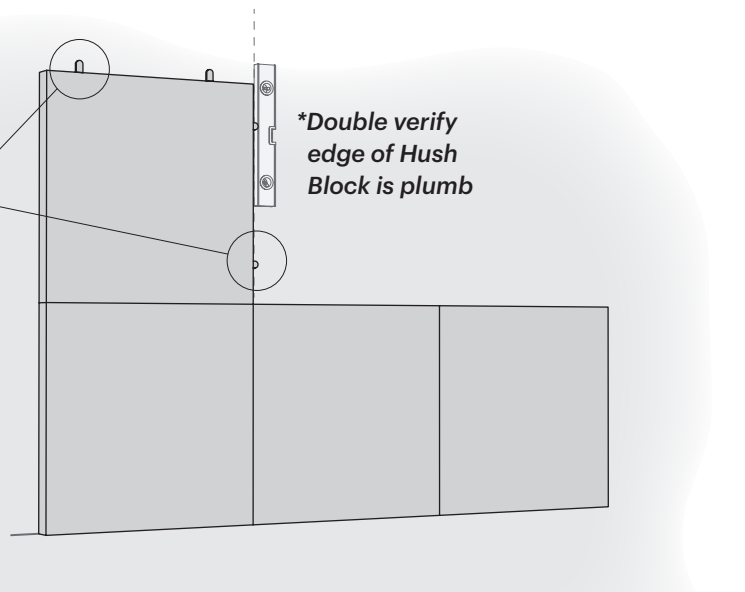
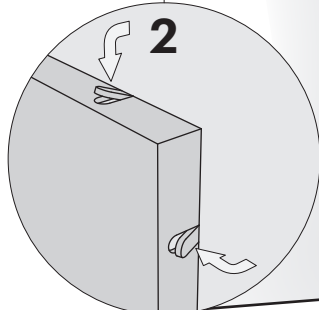
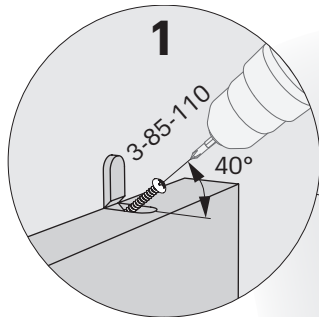
- b** Start from the left side. Install the first block on the second row (and subsequent rows) by sliding the tabs behind first block (on bottom row) until flush and tight.

Note: If there is negative space in the design, repeat Step 2



- c 1** Proceed to install drywall screws into all available openings.

- 2** Close felt flaps until flush with the block.



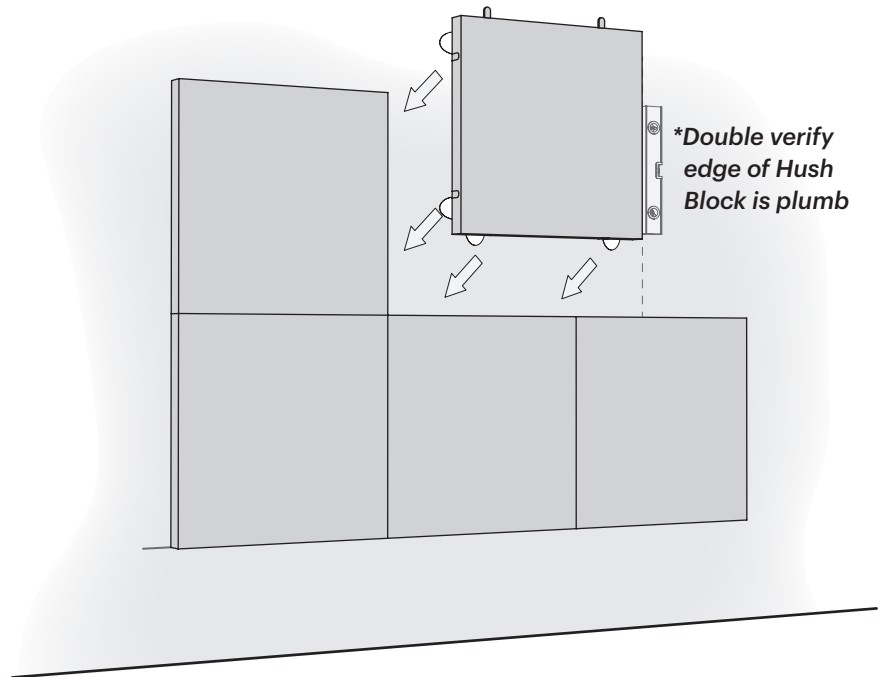
Installation

4 Install Remaining Hush Blocks *cont...*

- d** Continuing toward the right side, install the next block.

Rotate all the steel tabs to the “out” position. On the side where the steel tabs are “out”, the felt flaps should be closed/flush. On the other sides the felt flaps should be open.

Slide tabs behind both adjacent blocks until flush and tight.

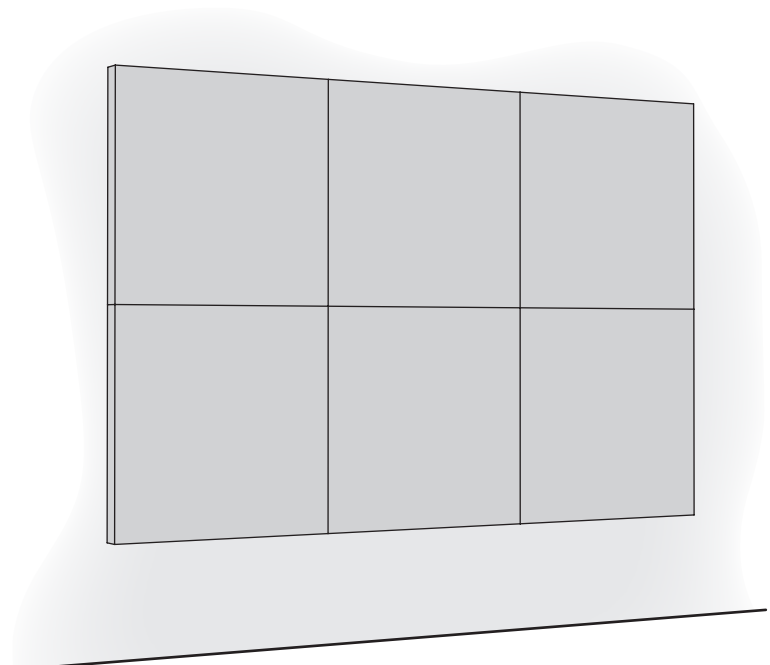


- e 1** Proceed to install drywall screws into all available openings as shown in Step 4c.
- 2** Close felt flaps until flush with the block as shown in Step 4c.

- f** Repeat the same process for additional blocks and additional rows until the entire feature is installed.

For best aesthetic appearance ensure the side without felt flaps is on the visible outside edge whenever possible.

g

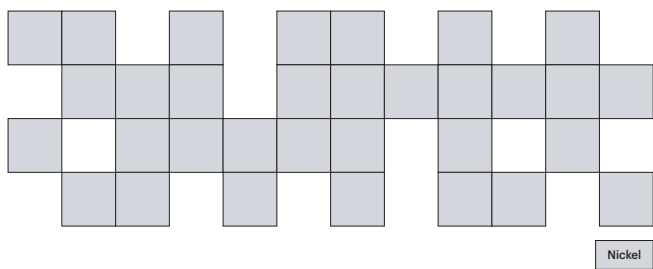


Design Starters

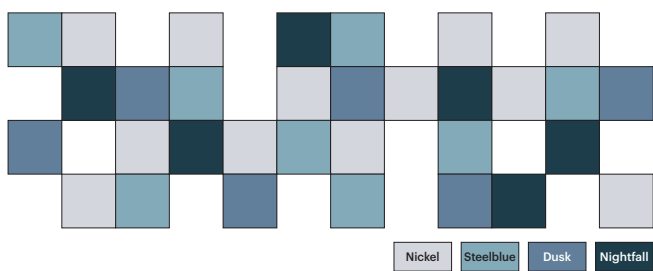
The following pages detail design starters for Hush Blocks, shown by design type and colorway. Please reference the diagrams for the correct layout and orientation of each block during installation.



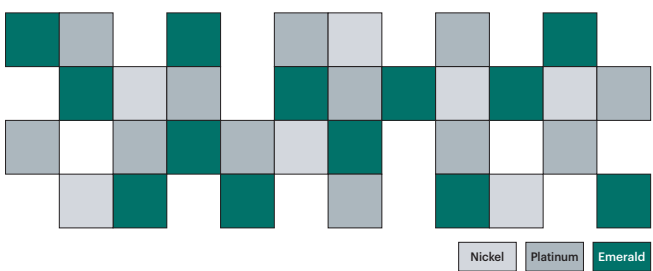
2" Depth
Design Starters: Pixel



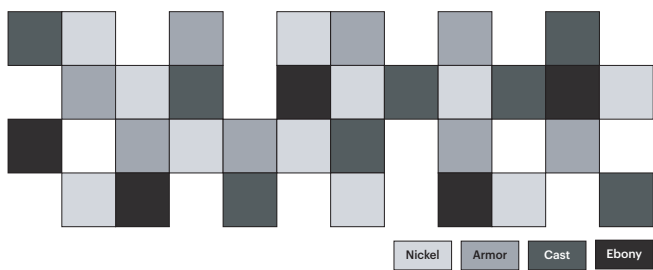
Monochromatic 4' x 12'



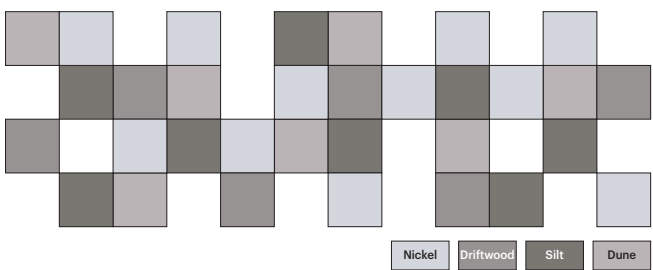
Blue 4' x 12'



Green 4' x 12'

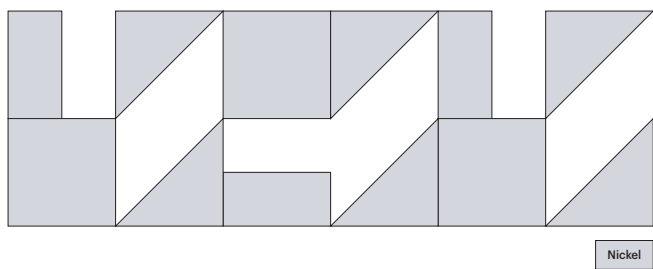


Gray 4' x 12'

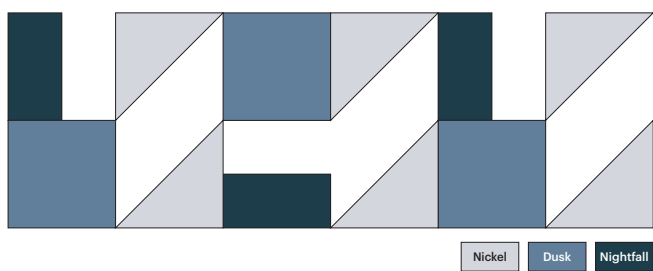


Neutral 4' x 12'

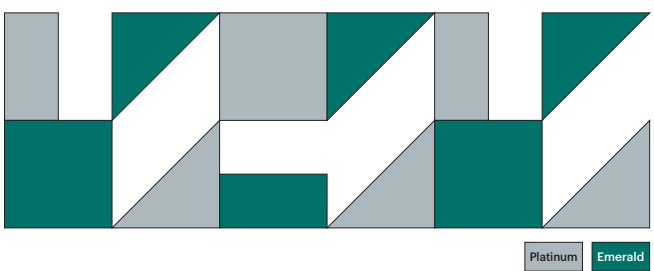
2" Depth
Design Starters: Stencil



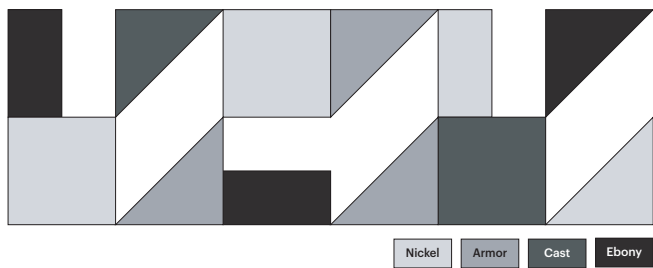
Monochromatic 4' x 12'



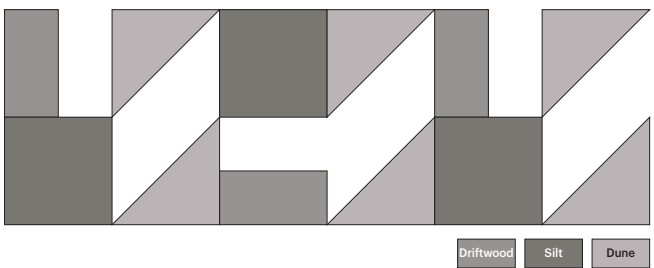
Blue 4' x 12'



Green 4' x 12'

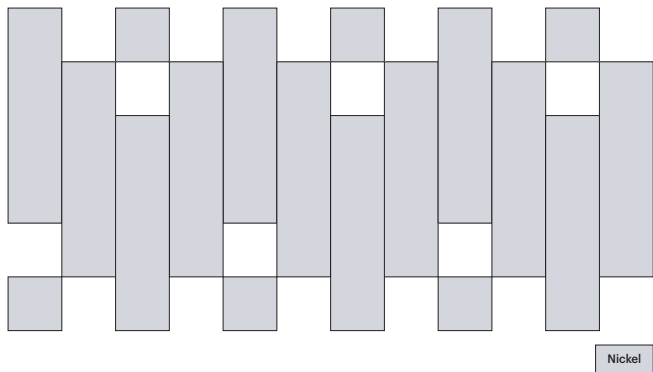


Gray 4' x 12'

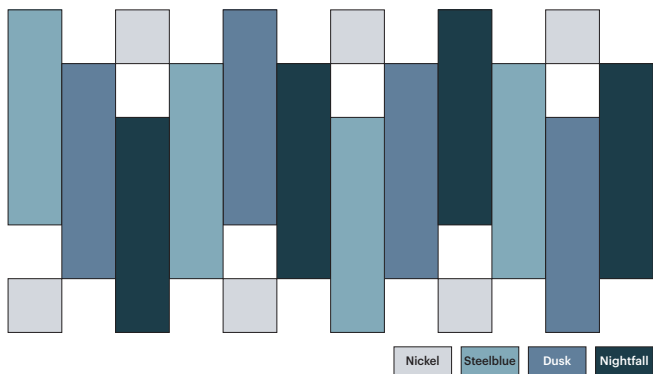


Neutral 4' x 12'

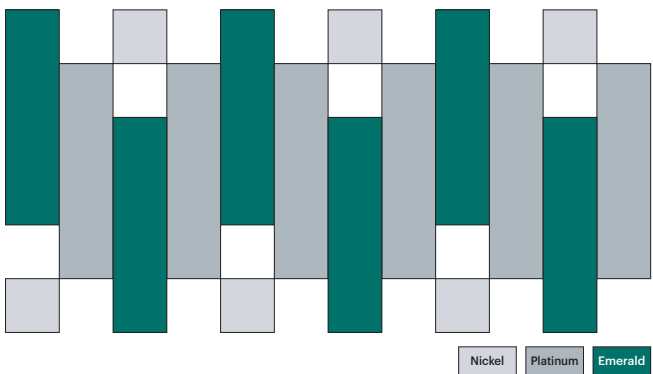
2" Depth
Design Starters: Ripple



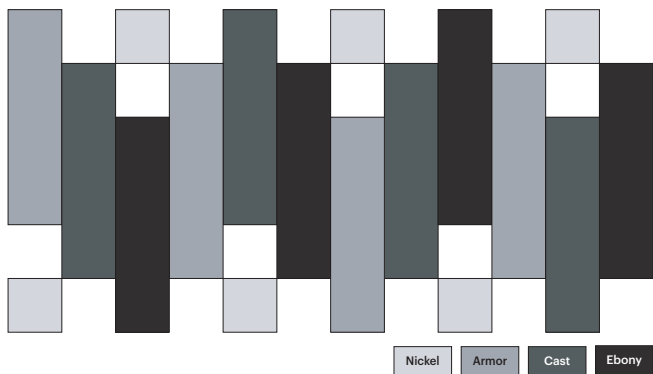
Monochromatic 6' x 12'



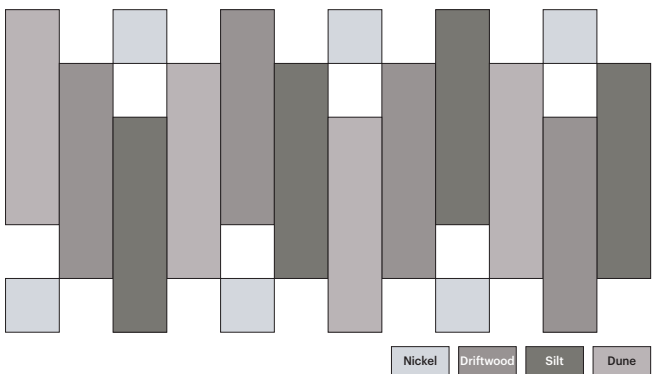
Blue 6' x 12'



Green 6' x 12'

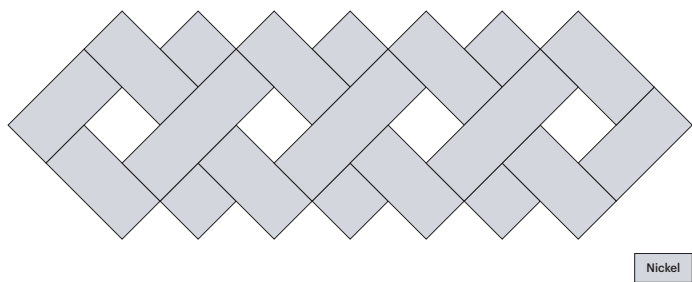


Gray 6' x 12'

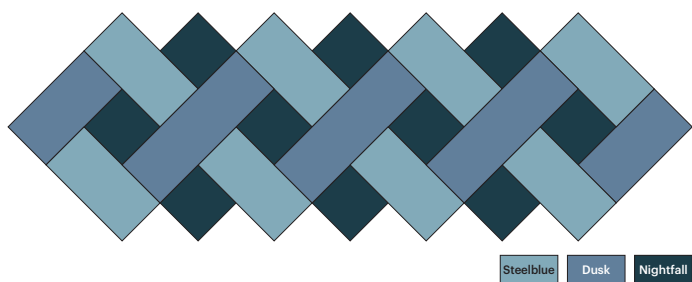


Neutral 6' x 12'

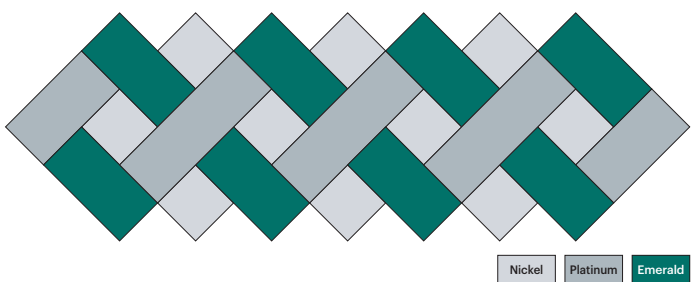
2" Depth
Design Starters: Braid



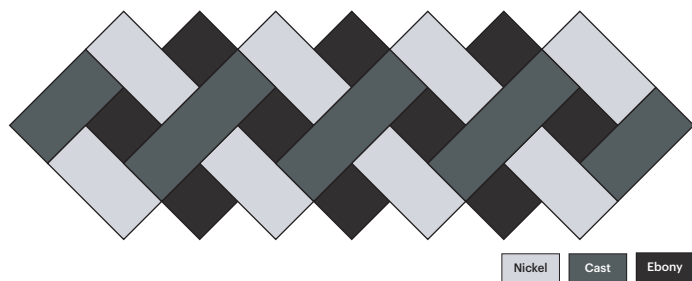
Monochromatic 4' × 12'



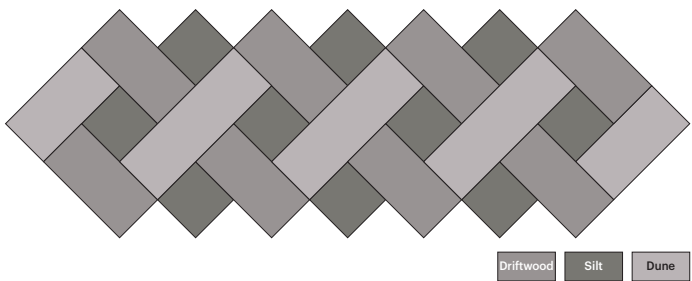
Blue 4' × 12'



Green 4' × 12'

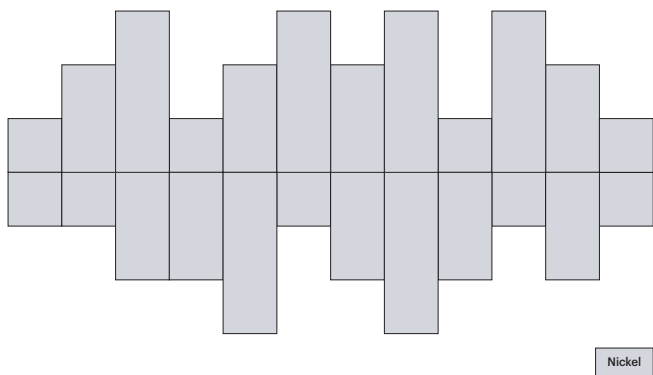


Gray 4' × 12'

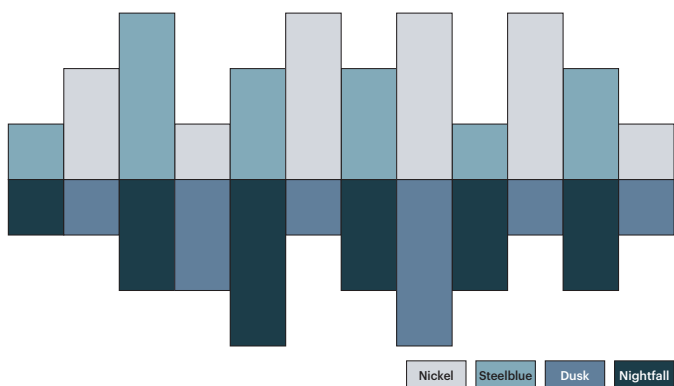


Neutral 4' × 12'

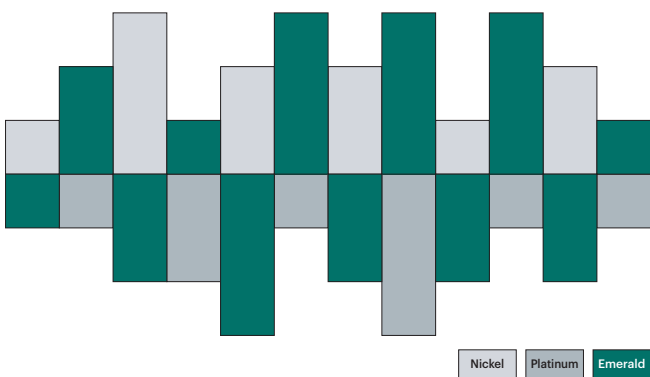
2" Depth
Design Starters: Rhythm



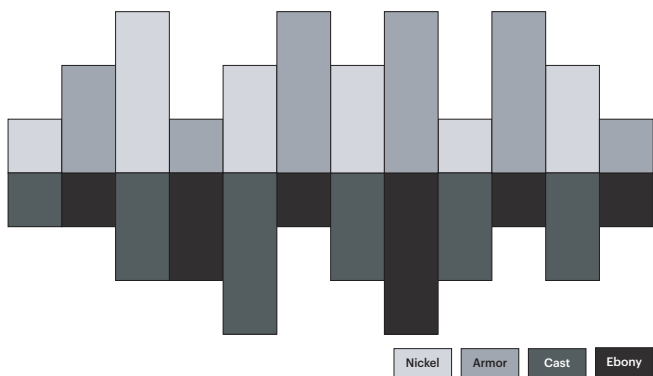
Monochromatic 6' x 12'



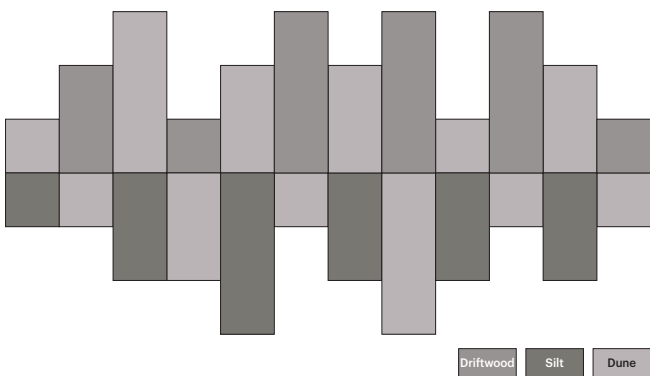
Blue 6' x 12'



Green 6' x 12'

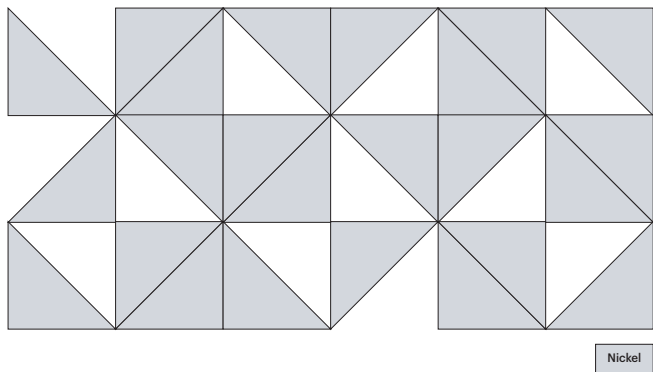


Gray 6' x 12'

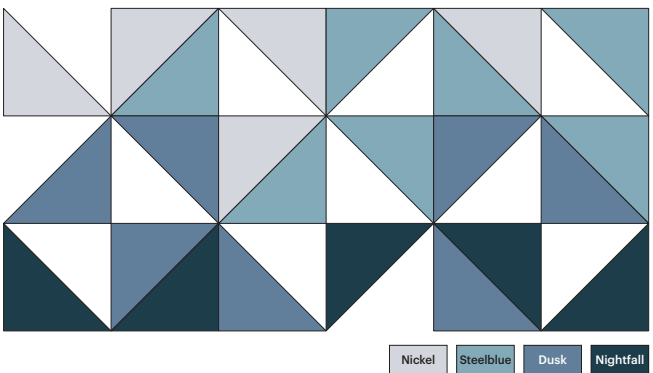


Neutral 6' x 12'

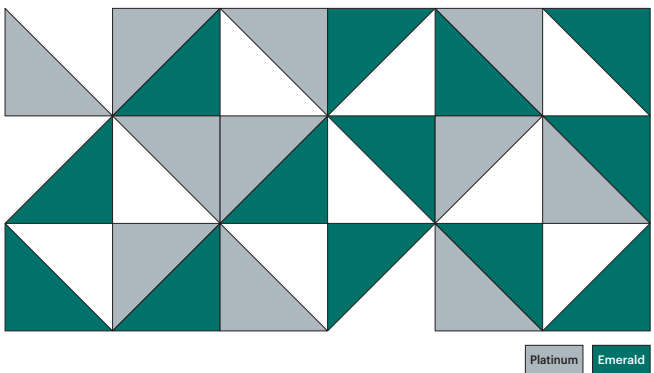
2" Depth
Design Starters: Fractal



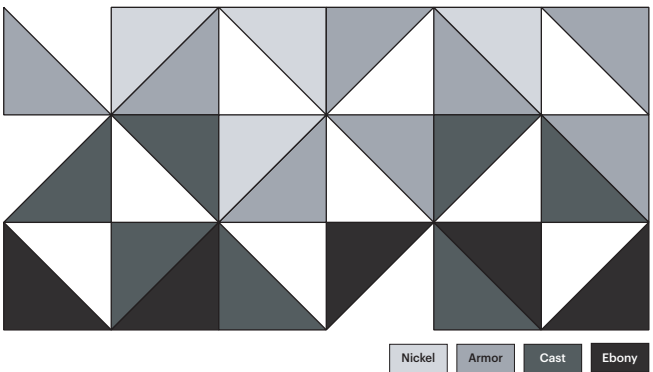
Monochromatic 6' × 12'



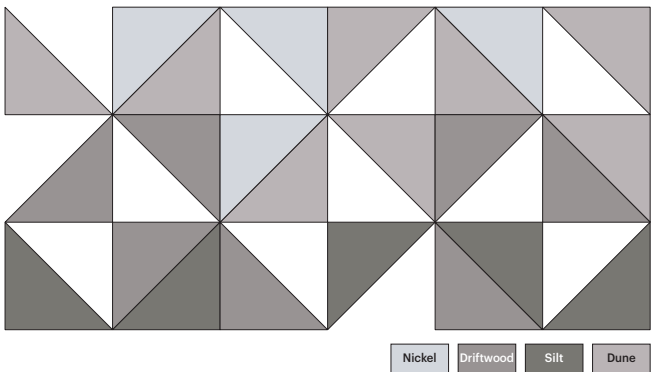
Blue 6' × 12'



Green 6' × 12'



Gray 6' × 12'



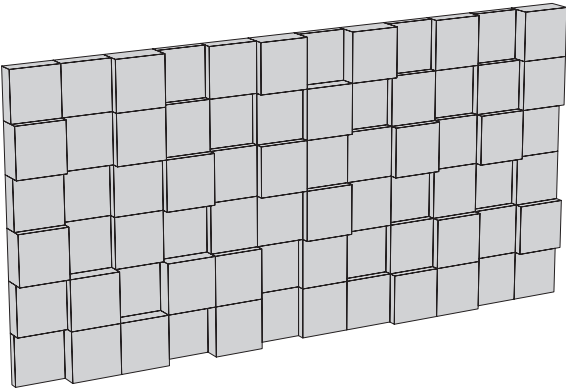
Neutral 6' × 12'

Various Depths
Design Starters: Stipple

4"	4"	6"	2"	4"	6"	2"	6"	2"	4"	2"	6"
6"	4"	6"	4"	2"	4"	6"	2"	4"	2"	4"	6"
4"	2"	4"	6"	4"	6"	4"	4"	6"	4"	6"	4"
6"	2"	4"	2"	4"	4"	6"	4"	2"	4"	2"	4"
4"	6"	2"	6"	6"	2"	4"	2"	4"	6"	4"	6"
2"	6"	6"	2"	6"	2"	4"	4"	6"	6"	4"	4"

Nickel

Monochromatic 6' × 12'



4"	4"	6"	2"	4"	6"	2"	6"	2"	4"	2"	6"
6"	4"	6"	4"	2"	4"	6"	2"	4"	2"	4"	6"
4"	2"	4"	6"	4"	6"	4"	4"	6"	4"	6"	4"
6"	2"	4"	2"	4"	4"	6"	4"	2"	4"	2"	4"
4"	6"	2"	6"	6"	2"	4"	2"	4"	6"	4"	6"
2"	6"	6"	2"	6"	2"	4"	4"	6"	6"	4"	4"

Nickel

Steelblue

Dusk

Nightfall

Blue 6' × 12'

4"	4"	6"	2"	4"	6"	2"	6"	2"	4"	2"	6"
6"	4"	6"	4"	2"	4"	6"	2"	4"	2"	4"	6"
4"	2"	4"	6"	4"	6"	4"	4"	6"	4"	6"	4"
6"	2"	4"	2"	4"	4"	6"	4"	2"	4"	2"	4"
4"	6"	2"	6"	6"	2"	4"	2"	4"	6"	4"	6"
2"	6"	6"	2"	6"	2"	4"	4"	6"	6"	4"	4"

Nickel

Platinum

Steel

Emerald

Green 6' × 12'

4"	4"	6"	2"	4"	6"	2"	6"	2"	4"	2"	6"
6"	4"	6"	4"	2"	4"	6"	2"	4"	2"	4"	6"
4"	2"	4"	6"	4"	6"	4"	4"	6"	4"	6"	4"
6"	2"	4"	2"	4"	4"	6"	4"	2"	4"	2"	4"
4"	6"	2"	6"	6"	2"	4"	2"	4"	6"	4"	6"
2"	6"	6"	2"	6"	2"	4"	4"	6"	6"	4"	4"

Nickel

Armor

Cast

Ebony

Gray 6' × 12'

4"	4"	6"	2"	4"	6"	2"	6"	2"	4"	2"	6"
6"	4"	6"	4"	2"	4"	6"	2"	4"	2"	4"	6"
4"	2"	4"	6"	4"	6"	4"	4"	6"	4"	6"	4"
6"	2"	4"	2"	4"	4"	6"	4"	2"	4"	2"	4"
4"	6"	2"	6"	6"	2"	4"	2"	4"	6"	4"	6"
2"	6"	6"	2"	6"	2"	4"	4"	6"	6"	4"	4"

Nickel

Silt

Ochre

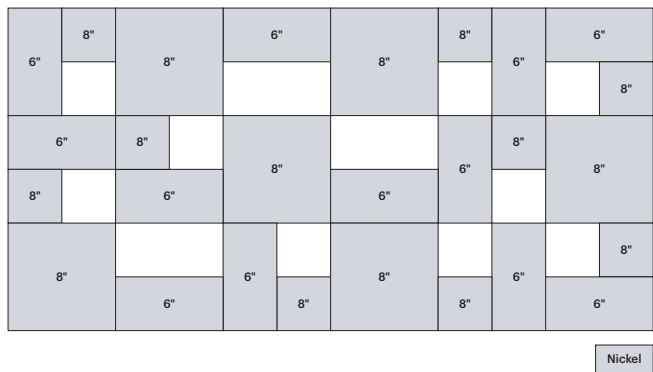
Mustard

Steelblue

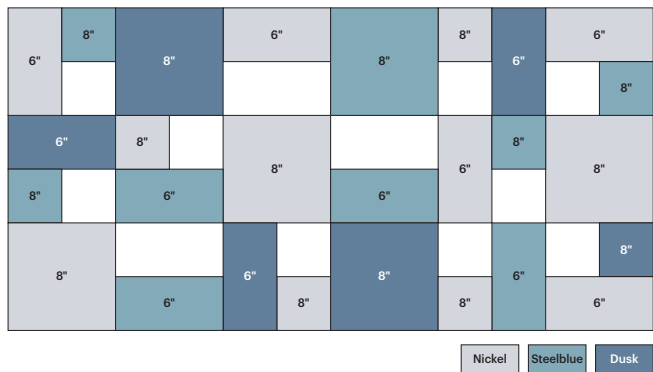
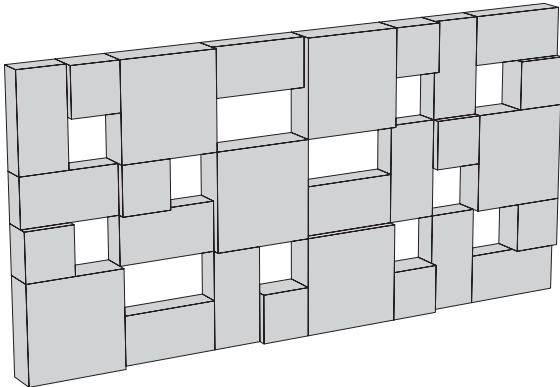
Saffron

Colorful 6' × 12'

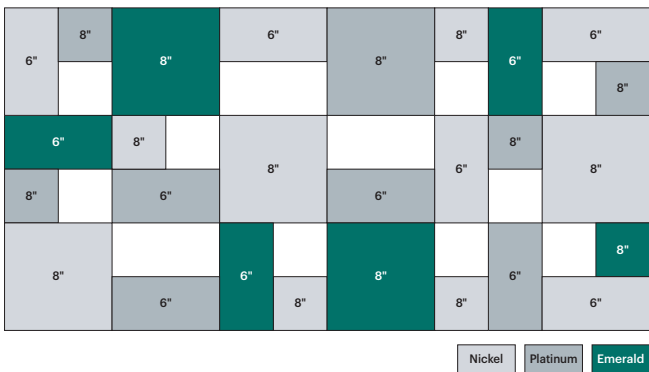
Various Depths
Design Starters: Ledge



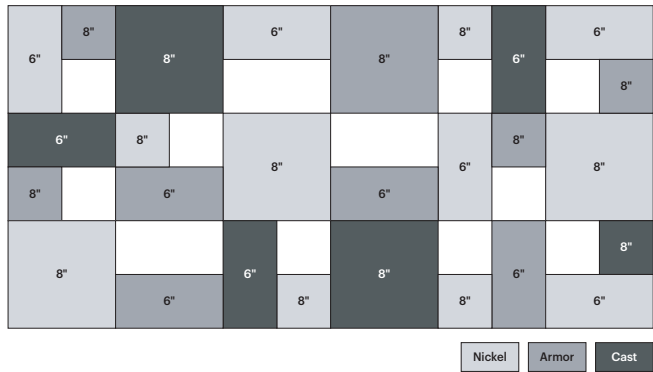
Monochromatic 6' × 12'



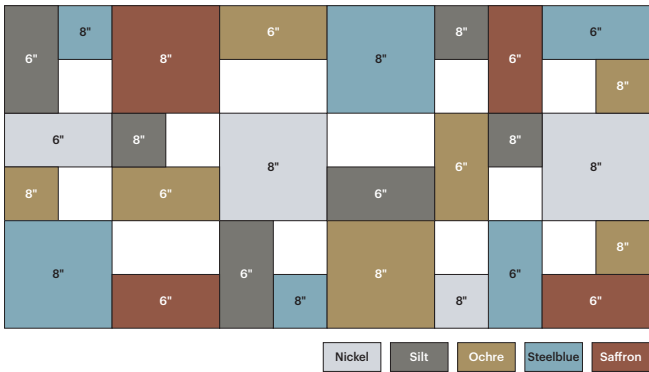
Blue 6' × 12'



Green 6' × 12'

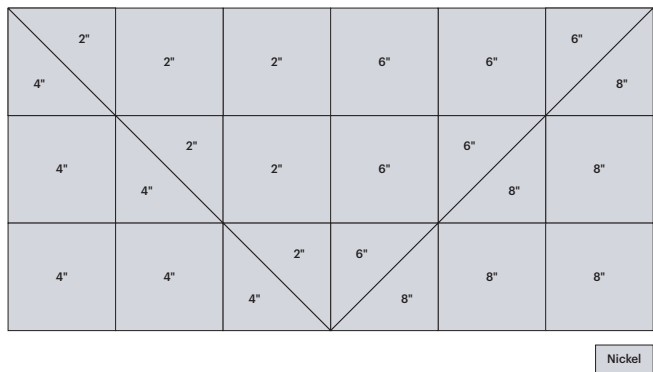


Gray 6' × 12'

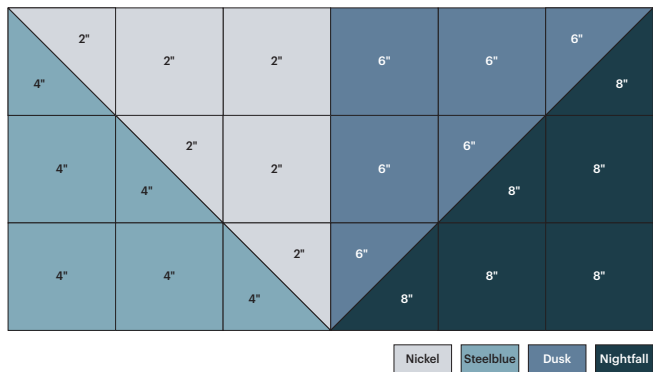
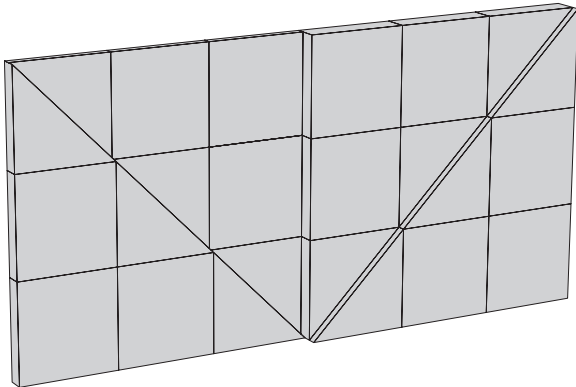


Colorful 6' × 12'

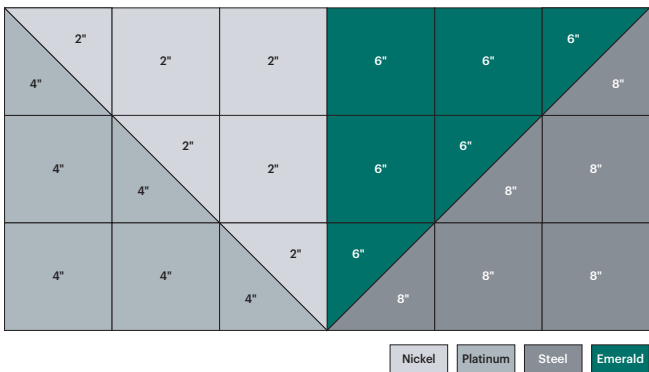
Various Depths
Design Starters: Magna



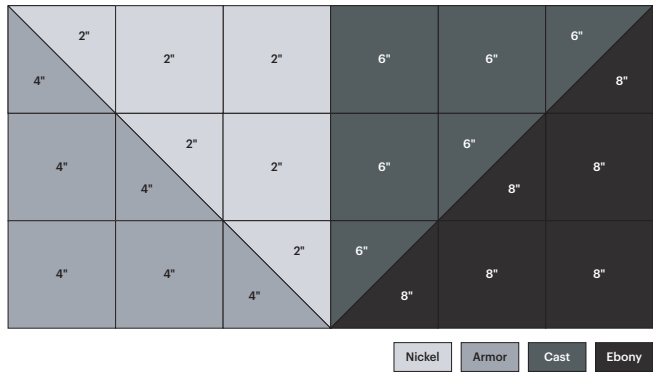
Monochromatic 6' x 12'



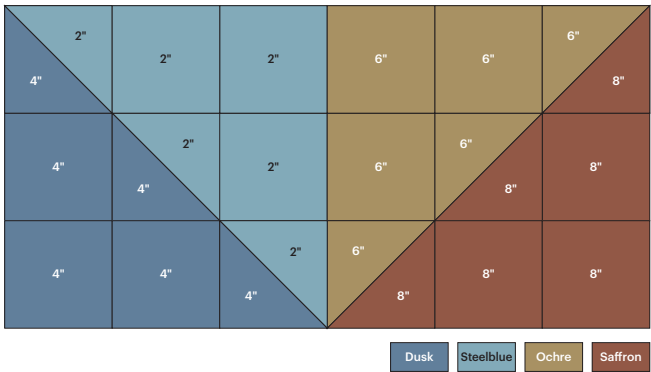
Blue 6' x 12'



Green 6' x 12'

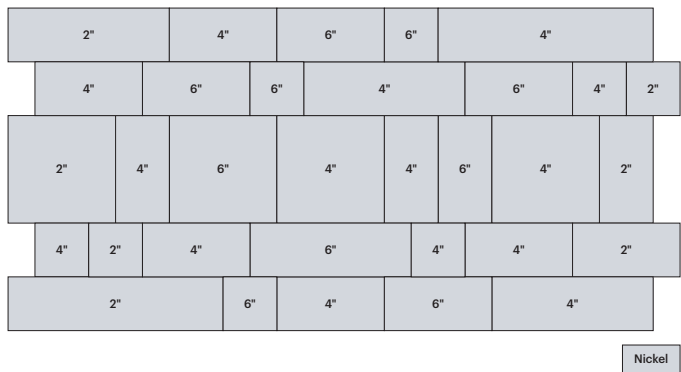


Gray 6' x 12'

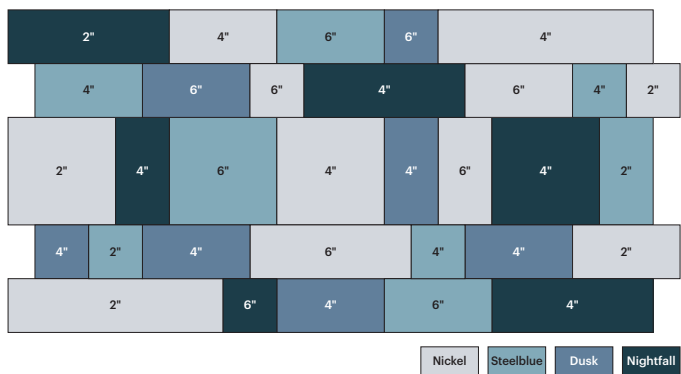
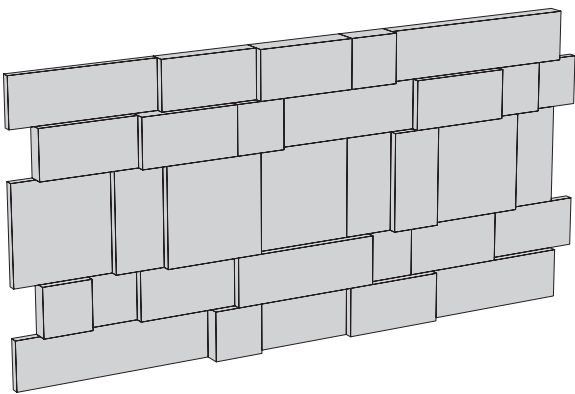


Colorful 6' x 12'

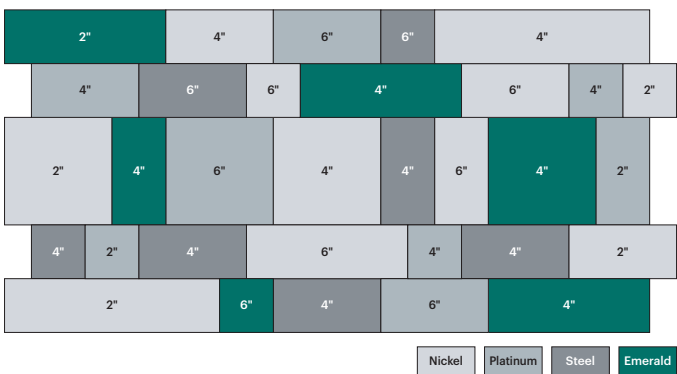
Various Depths
Design Starters: Impasto



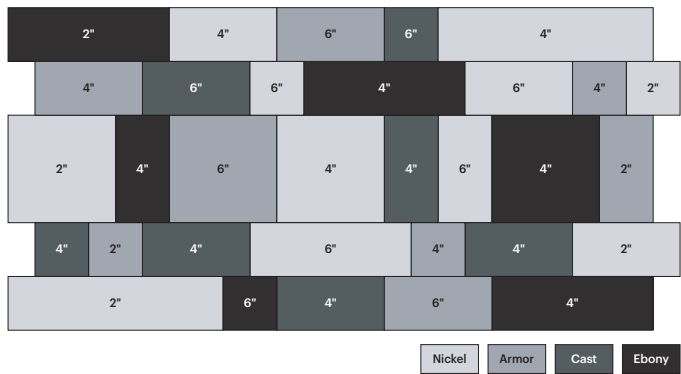
Monochromatic 6' × 12'6"



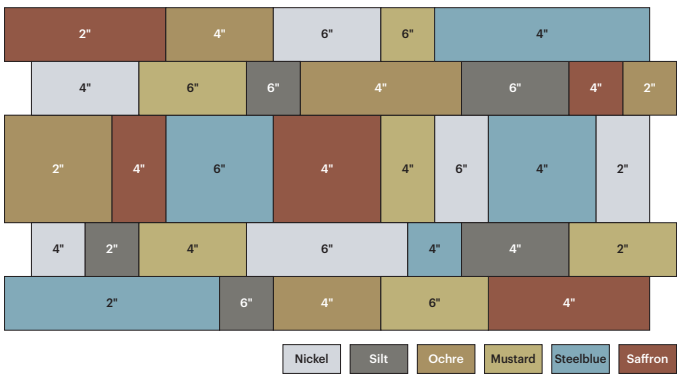
Blue 6' × 12'6"



Green 6' × 12'6"



Gray 6' × 12'6"



Colorful 6' × 12'6"

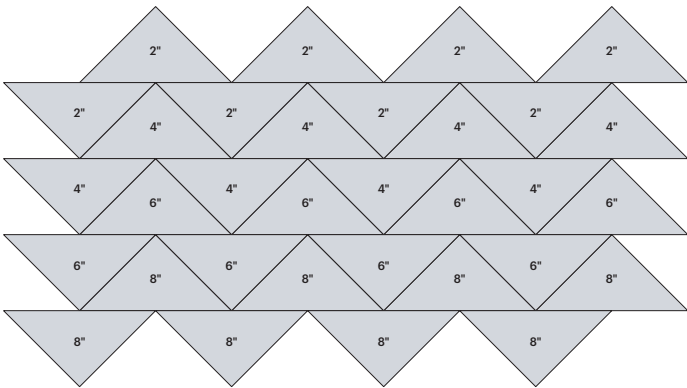
Hush Blocks

SimpleSpec 300.43™

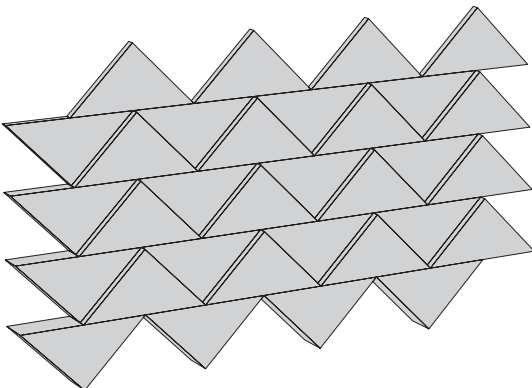
Installation
Manual

Various Depths

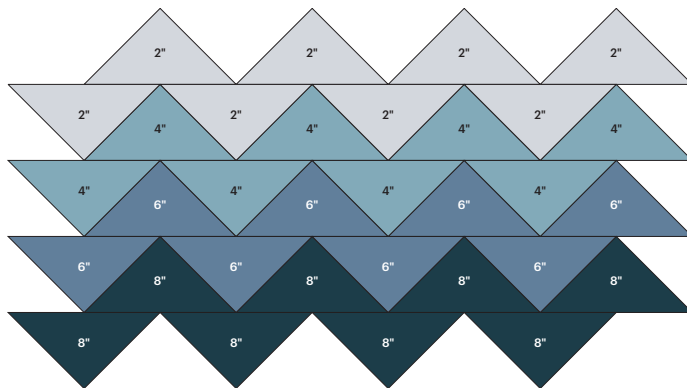
Design Starters: Amp



Nickel

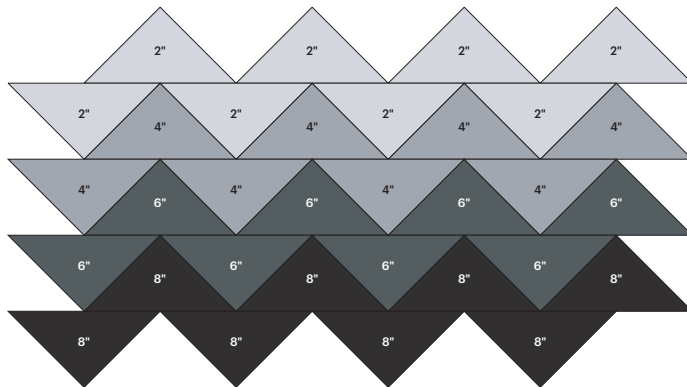


Monochromatic 7' x 12'9"



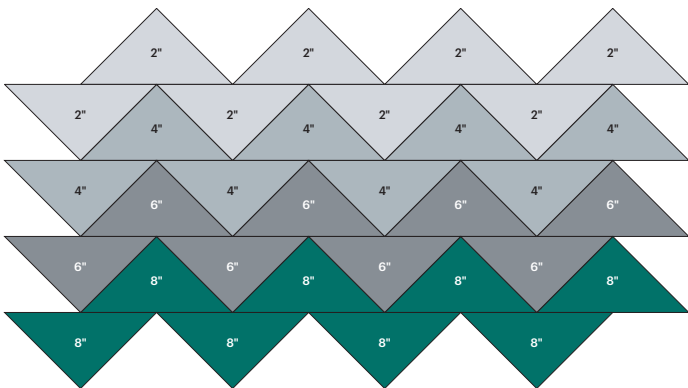
Nickel Steelblue Dusk Nightfall

Blue 7' x 12'9"



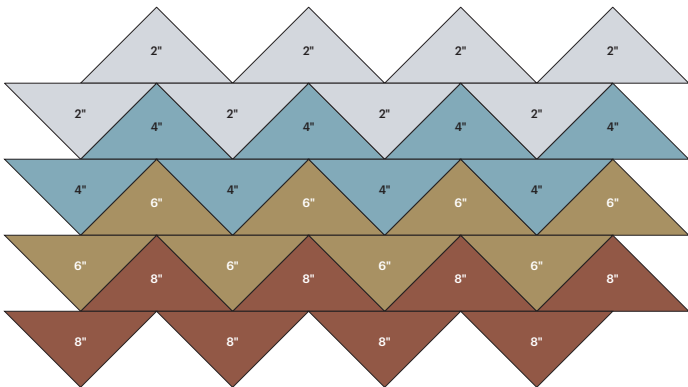
Nickel Armor Cast Ebony

Gray 7' x 12'9"



Nickel Platinum Steel Emerald

Green 7' x 12'9"



Nickel Steelblue Ochre Saffron

Colorful 7' x 12'9"

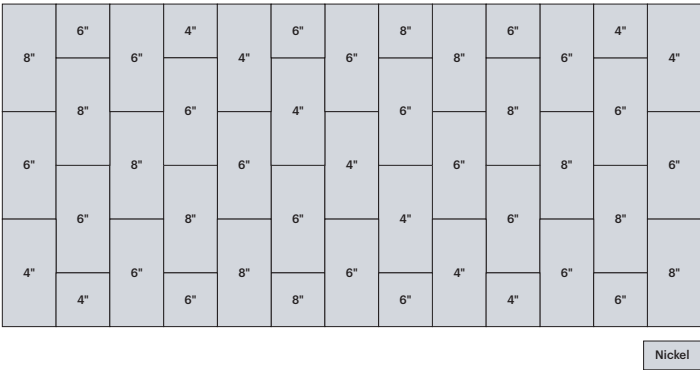
Hush Blocks

SimpleSpec 300.43™

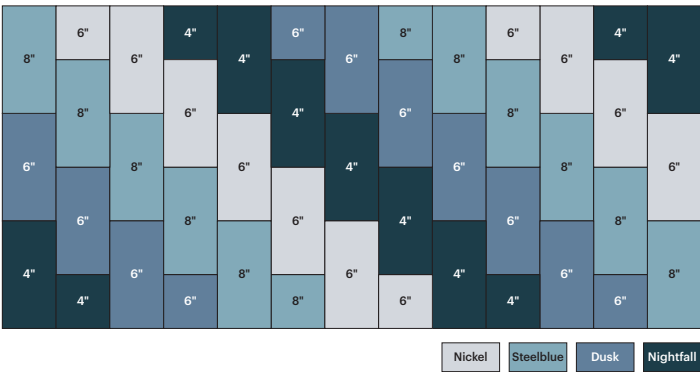
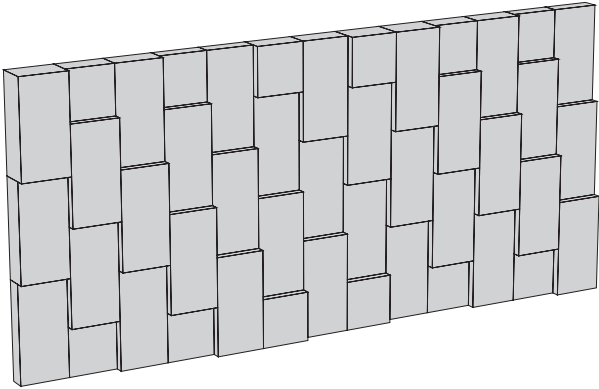
Installation
Manual

Various Depths

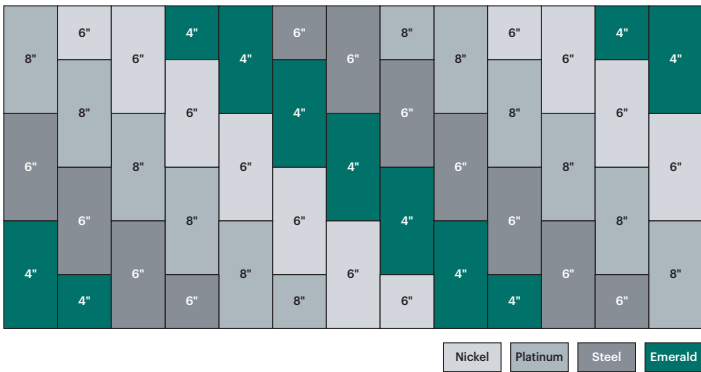
Design Starters: Flux



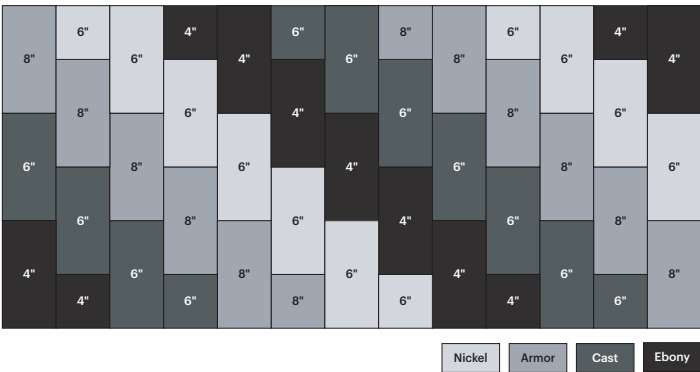
Monochromatic 6' × 13'



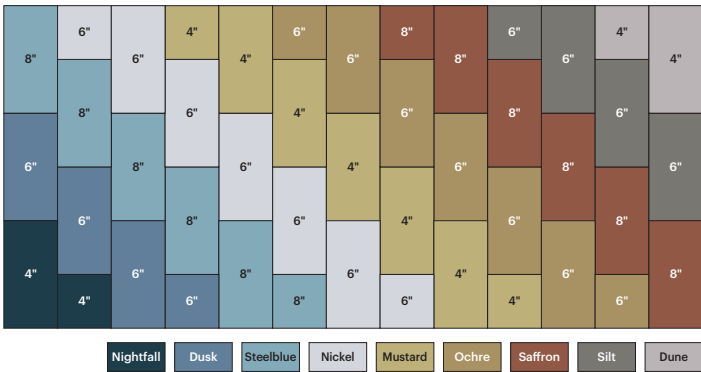
Blue 6' × 13'



Green 6' × 13'



Gray 6' × 13'



Colorful 6' × 13'

Product Description and Specifications

Create a private space, contain sound, and build a more comfortable environment with this absorptive, modular tile system. Hush Blocks is a series of lightweight tiles made from Sola Felt and boasts an NRC rating ranging from 0.80 to 1.25. Use Hush Blocks to create unique features that will leave a lasting impression.

Features and Benefits

- Variety of color options
- Noise Reduction Coefficient (NRC) of 0.80-1.25
- Cost-effective decorative feature
- Easy to specify
- Easy to install

Panel Tolerances

All dimensions and squareness are subject to a 2% tolerance.

Available Finishes

Hush Blocks can be specified in a variety of color options.

See 3form’s Sola Felt colors at:
<https://www.3-form.com/materials/sola-felt>

Flammability and Smoke Test Results

- Building Code Approvals

Hush Blocks have been independently tested and meet the criteria for approved interior finishes as described in the 2015 International Building Code®.

Material	Test - ASTM E84	Hush Blocks	Result
Felt	Flame Spread Smoke Generated	10 105	Class A: 0-25 <450

Panel Weight

Material	Thickness	Weight Flux
Felt	¼" (6.3mm)	0.3 lb/ft² (1.46 kg/m²)

Sound Absorption Test Results

Material	Depth	NRC	Alpha - W
Felt	2"	0.8	0.65 MH
Felt	4"	1.05	1 MH
Felt	6"	1.2	1 MH
Felt	8"	1.25	1 MH

Cleaning Instructions

Hush Blocks should be cleaned periodically. A regular, seasonal cleaning program will dramatically help prevent noticeable weathering and dirt build-up.

To remove airborne debris and dust, it is recommended to periodically vacuum Hush Blocks. Please note the slight shedding of fibers from the Felt is normal and not indicative of any defect.

To treat liquid stains, remove spills immediately using a clean damp cotton cloth or with detergent soap and warm water. Carpet and fabric cleaners can usually be used; always test an inconspicuous area before the actual stain.

Do:

- Vacuum or use a soft brush to clean Hush Blocks

Do not:

- Use strong solvents, highly alkaline or abrasive cleaning agents.
- Do not completely saturate module with cleaning solution or water.