



# Exterior Chroma Boxes

## Contents

Material	1
Common Designs	2
Hardware	3
XT Right Angle Bracket	4
Non-Lit Bench Guidelines	5
Design Options	6

## Material

Our Chroma XT material is ideal for seamed, enclosed box applications which can be manufactured utilizing any of our exterior-rated colors. This durable and versatile acrylic material can be backlit with the addition of a diffusion layer (Ghost), and the Renewable Matte finish provides the durability and refinishability needed to keep these features looking their best.

\*3form has not engineered these boxes or benches to hold a certain weight limit. We can provide real-world examples or engineering calculations to validate customer needs upon request.





Common Designs

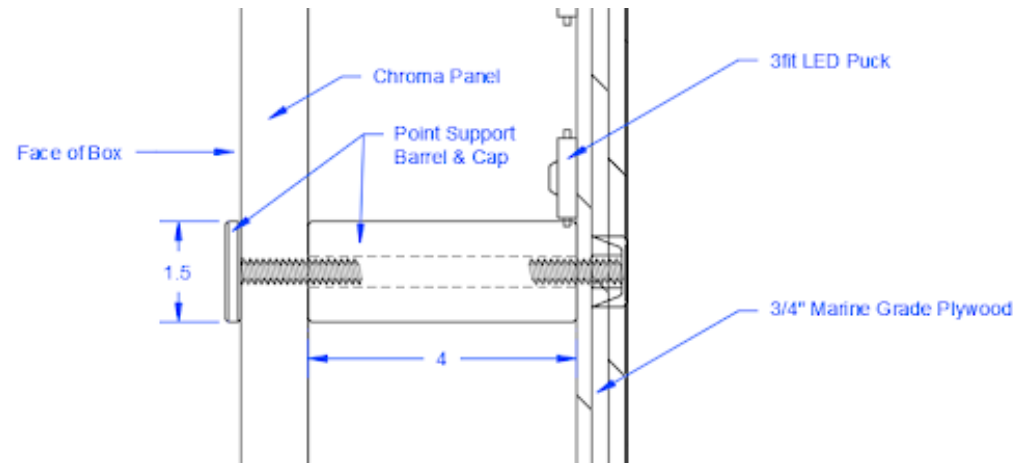


# Hardware

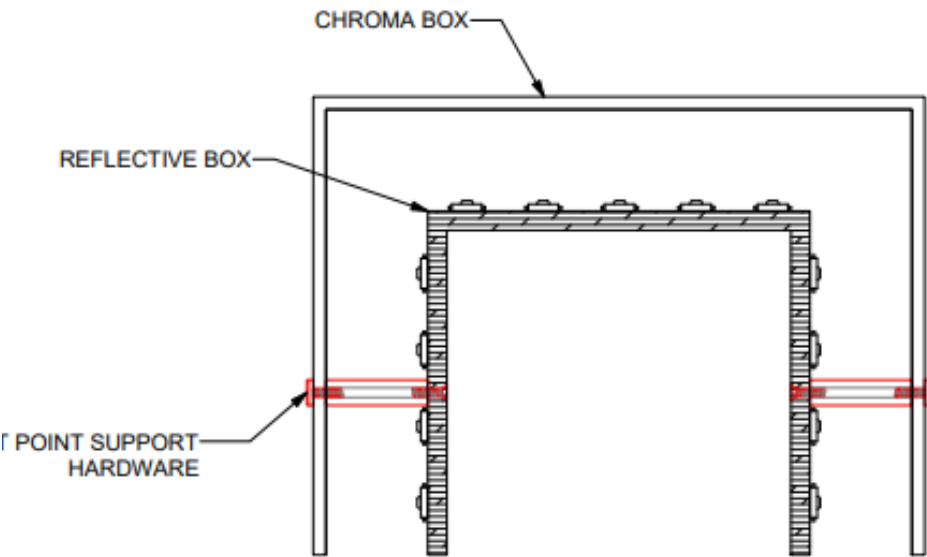
3form's standard Chroma XT boxes can take many forms, as they may sit on the ground or be installed vertically, however, our hardware system remains consistent and is designed specifically for Chroma XT. We can provide a fully backlit solution, as shown to the right, or unlit solutions.

Chroma XT boxes are fabricated to leave room for expansion and contraction of the material, a natural reaction of resin material heating and cooling.

All non-seamed edges need to be sealed on site to mitigate against water ingress and infestation, for which 3form recommends GE Silglaze II (SCS2800).



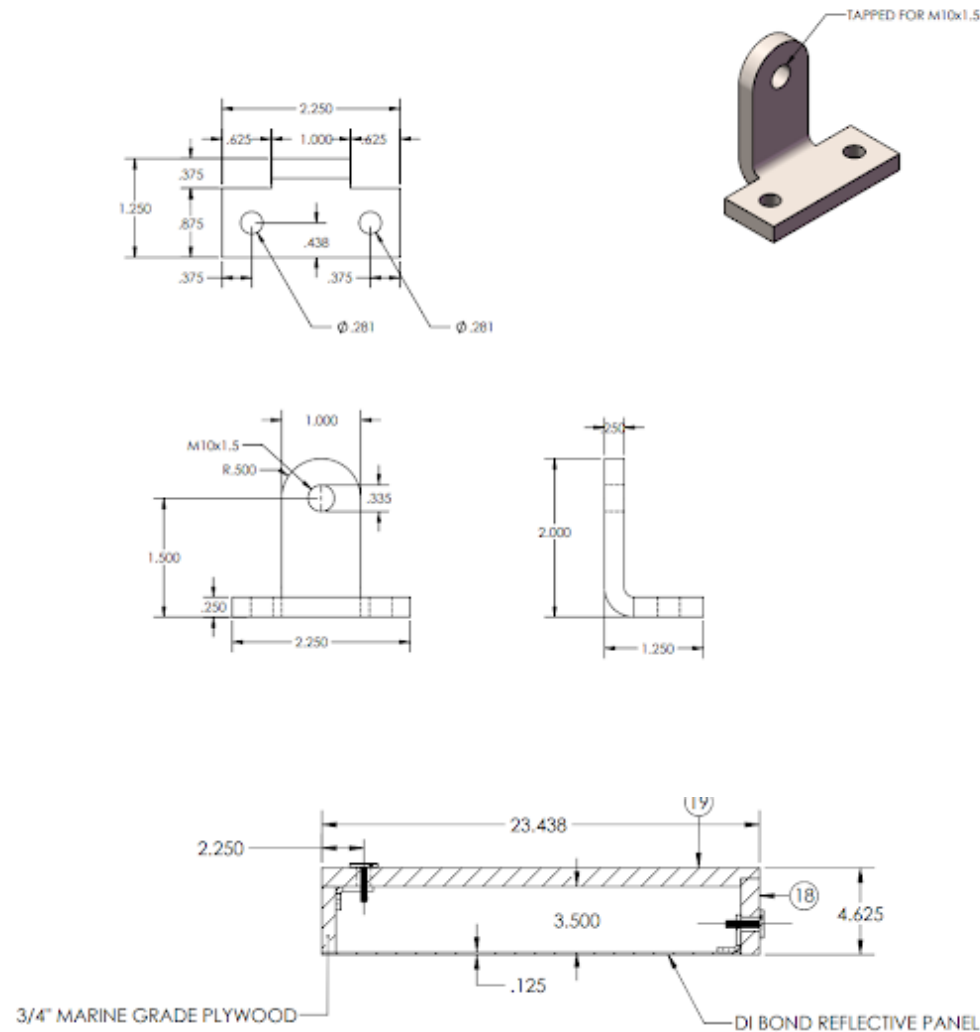
Point Support XT detail



# XT Right Angle Bracket

3form's custom XT right angle bracket is a key component of the Chroma XT box hardware system. It is compatible with 3form's XT Point Support cap and can be directly anchored with the M10 threaded hole. Most commonly, these are attached to a plywood backer supplied by 3form. The use of this hardware allows for up to 24" of unsupported span on the front of the Chroma XT box.

## XT BRACKET DETAILS



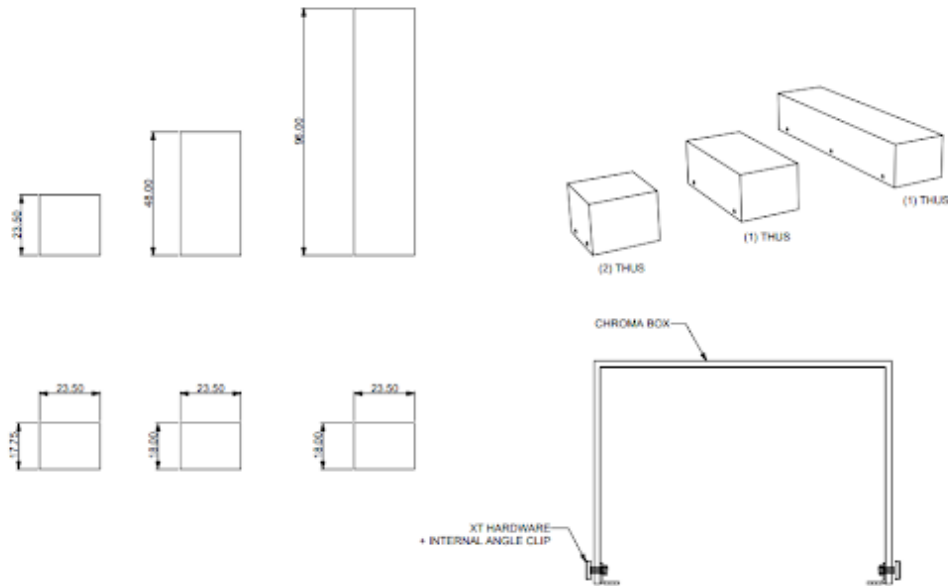
# Non-Lit Bench Guidelines

Unlit Chroma XT box benches can elevate a space in a budget-conscious way.

When specifying, 3form recommends the following:

- Maximum 18" High
- Maximum 24" Wide
- 1" gauge Chroma XT

If the above guidelines are followed, no internal structure is necessary.



## Design Options

What is included in our solution?

- Chroma XT boxes
- Fabrication, hardware, and lighting

What design variations are there?

- Color
- Dimensions
- Shape
- Lit or unlit

What does customer have to cover?

- Approvals, field measurements
- Edge sealing/protection from water ingress and infestation

For additional information about this solution, please contact your local Materials Consultant.

