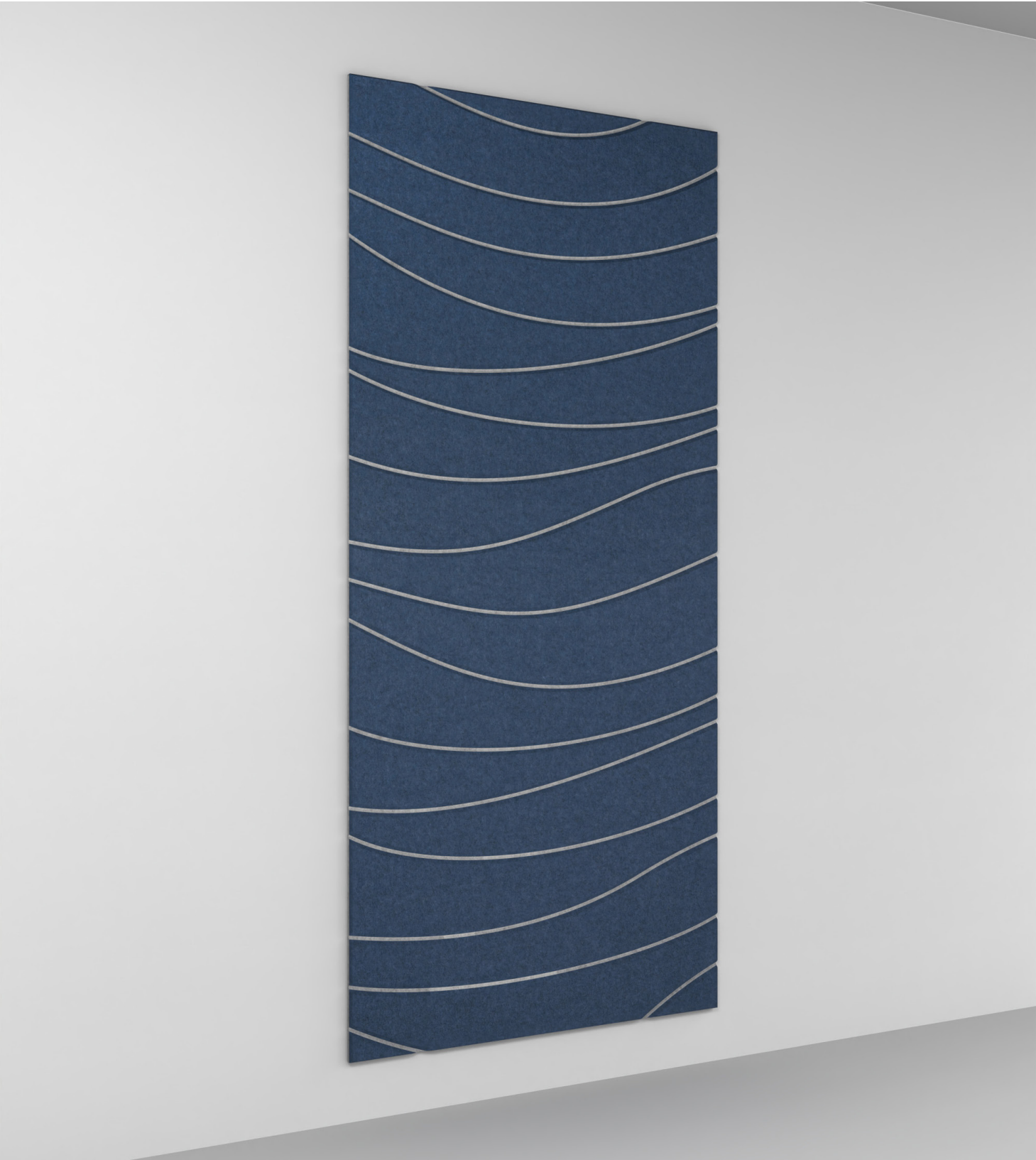
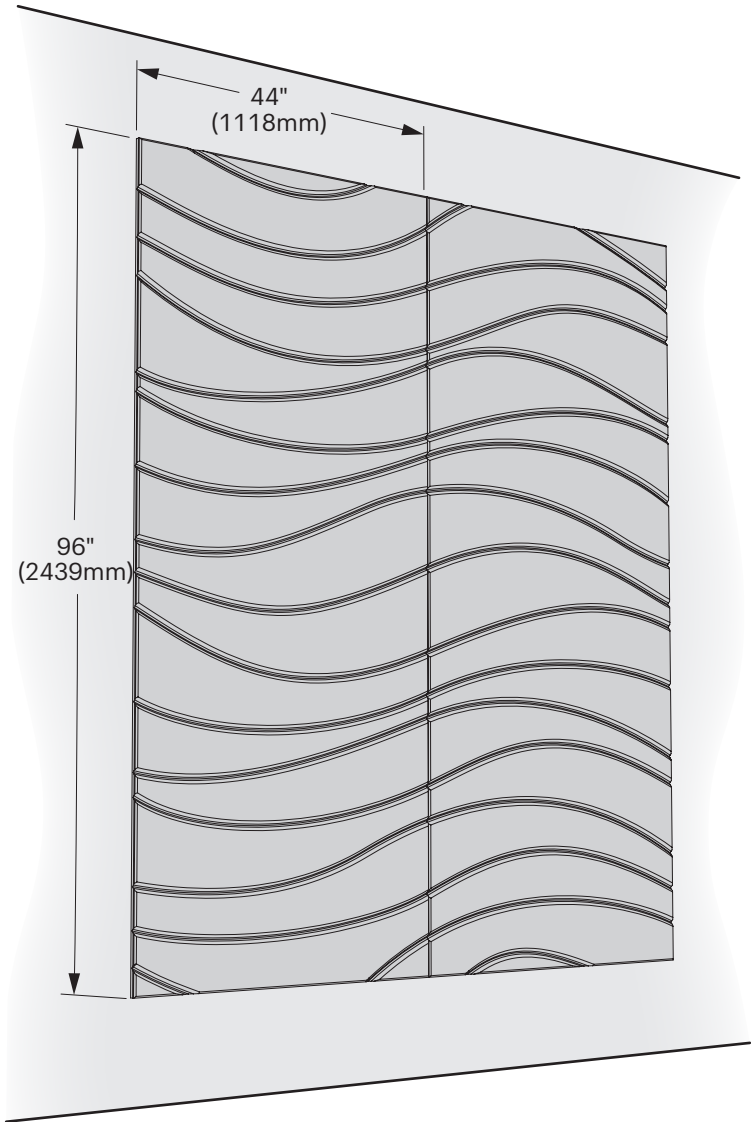


Hush Stack
SimpleSpec 300.47™

Installation
Manual

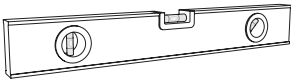


Overview



Installation

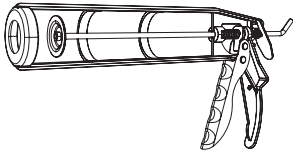
Required Materials



Level



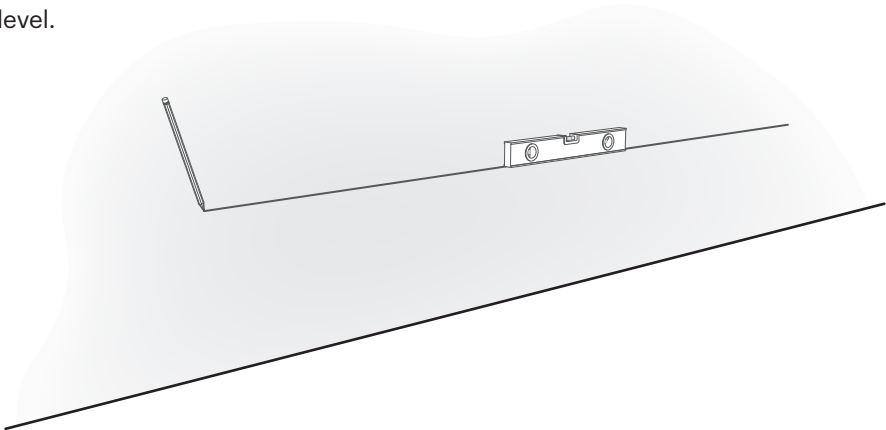
Heavy Duty Construction Adhesive
*Liquid Nails LN-903



Caulking
Gun

1 Mark Location to Install on Wall

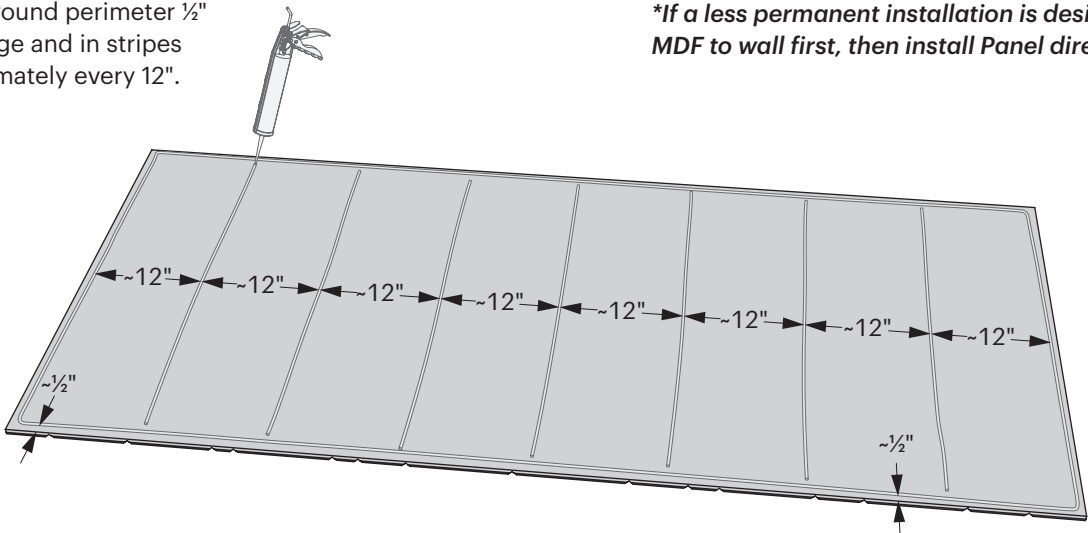
Make sure line is level.



2 Apply Adhesive to Back of Panel

Apply around perimeter $\frac{1}{2}$ " from edge and in stripes approximately every 12".

**If a less permanent installation is desired, install $\frac{1}{8}$ " MDF to wall first, then install Panel directly to the MDF*

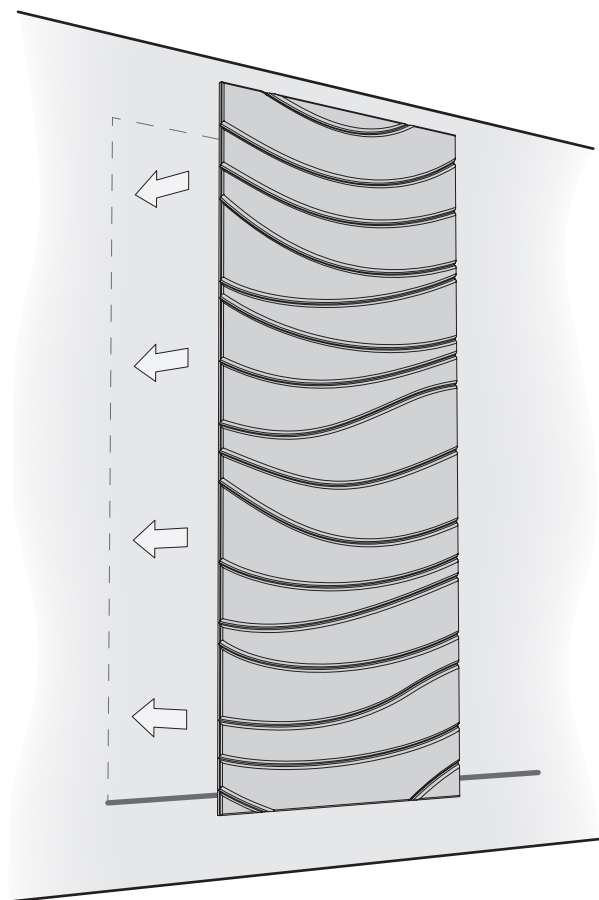


Installation

3 Install on Wall

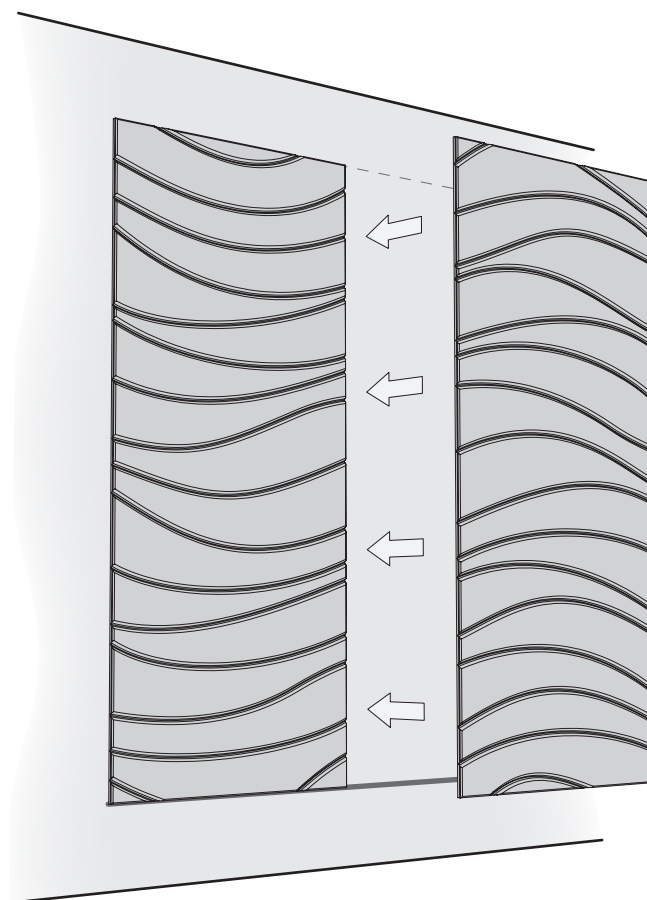
****Align panels prior to the adhesive curing!***

Some shimming could be required for panels to align and sit flat, depending on the flatness of the wall surface.



4 Install Additional Panels

Repeat Steps 2-3 for additional panels ensuring the panels are aligned prior to the adhesive curing.



Product Description and Specifications

Features and Benefits

- Variety of color options
- 10 base patterns
- Cost-effective decorative feature
- Easy to specify
- Easy to install

Available Finishes

Hush Stack Panels can be specified in a variety of color options.

See 3form’s Sola Felt colors at:
<https://www.3-form.com/materials/sola-felt>

Flammability and Smoke Test Results -

Building Code Approvals

Hush Stack Panels have been independently tested and meet the criteria for approved interior finishes as described in the 2018 International Building Code®.

Test	Sola Felt %"	Result
ASTM E84 Flame Spread Smoke Generated	50 300	Class B: 26-75 <450

*Hush Stack Panels are created using two ¾" Sola Felt Panels.

Panel Weight

Solution	Thickness	Weight Flux
Sola Felt	¾" (19mm)	0.6 lb/ft² (2.92 kg/m²)

Sound Absorption Test Results

Solution	Test-ASTM C423-09	Result
Hush Stack	Noise Reduction Coefficient	0.65
Hush Stack	Sound Absorption Average	0.63
Hush Stack	Alpha-W	0.58H

Cleaning Instructions

Hush Stack Panels should be cleaned periodically. A regular, seasonal cleaning program will dramatically help prevent noticeable weathering and dirt build-up. To remove airborne debris and dust, it is recommended to periodically vacuum Hush Stack Panels. Please note the slight shedding of fibers from the Felt is normal and not indicative of any defect.

To treat liquid stains, remove spills immediately using a clean damp cotton cloth or with detergent soap and warm water. Carpet and fabric cleaners can usually be used; always test an inconspicuous area before the actual stain.

Do:

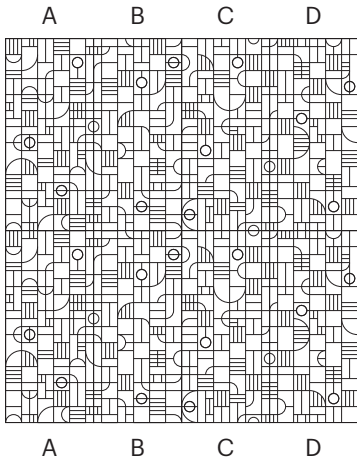
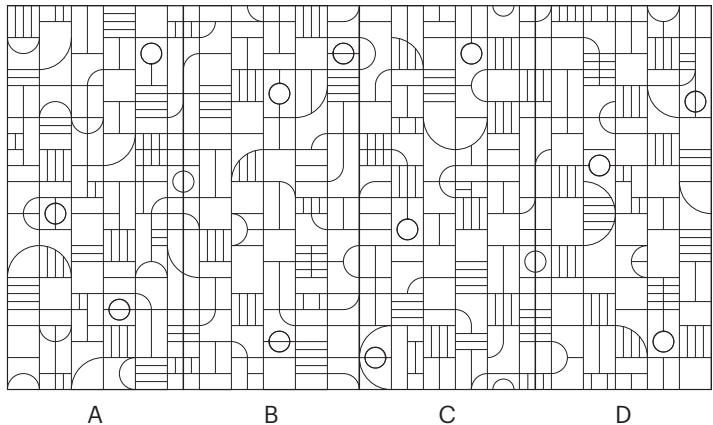
- Vacuum or use a soft brush to clean Hush Stack Panels.

Do not:

- Use strong solvents, highly alkaline or abrasive cleaning agents.
- Do not completely saturate module with cleaning solution or water.

Available Patterns

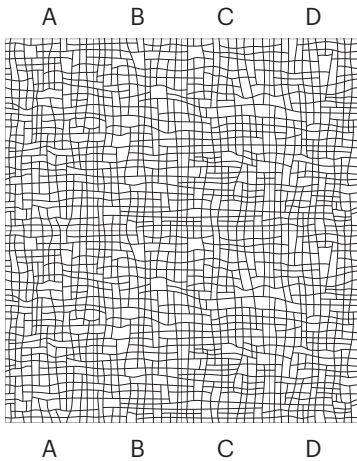
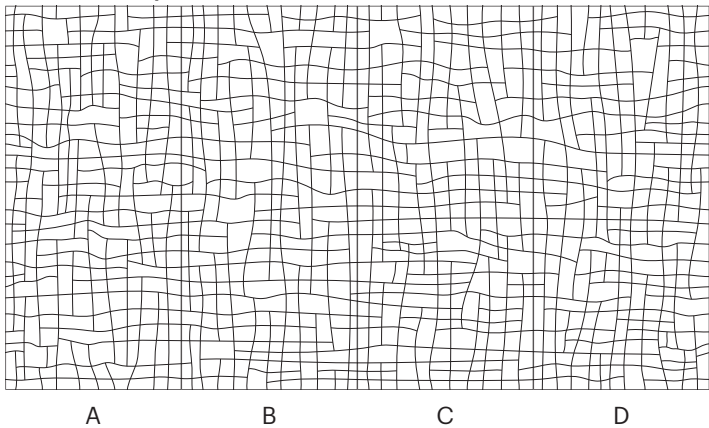
Bauwows



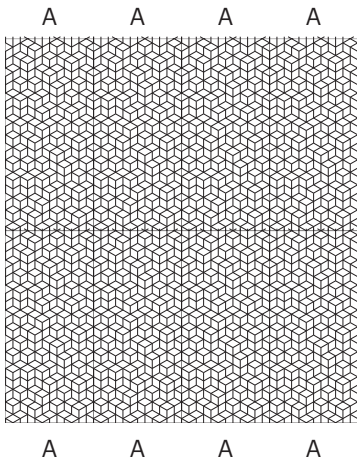
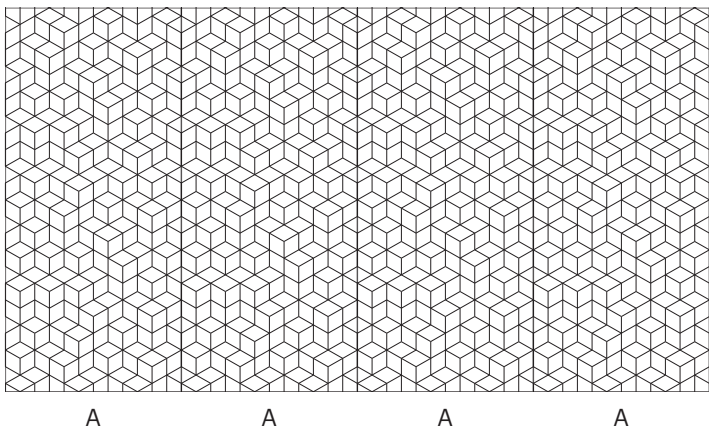
Product Description and Specifications

Available Patterns *cont...*

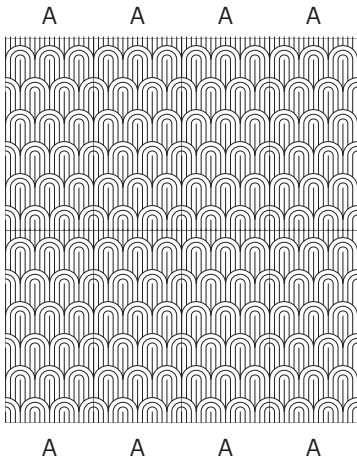
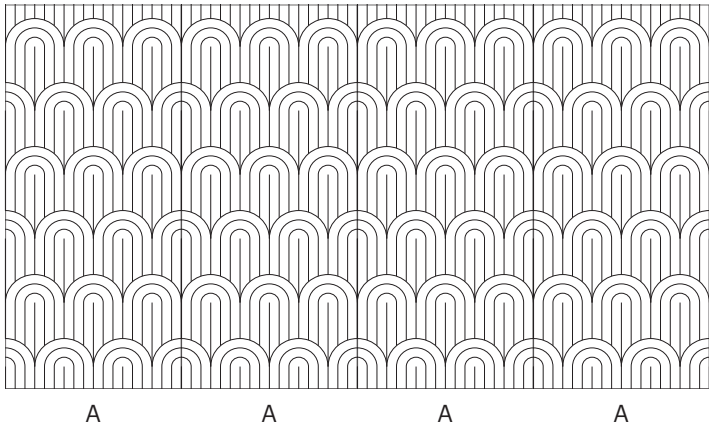
Connection Square



Cubed



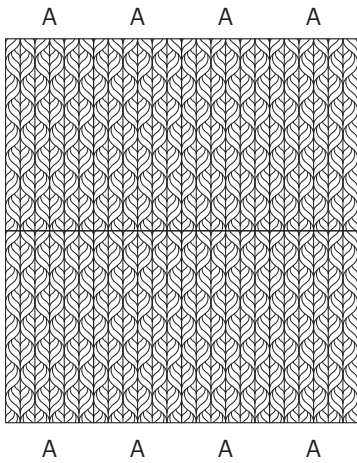
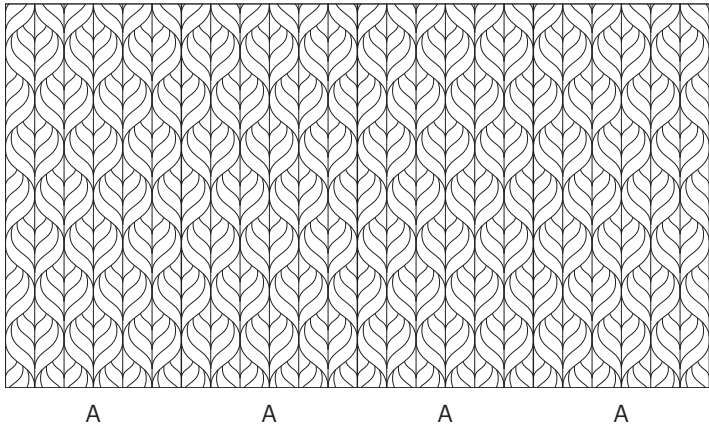
Deco



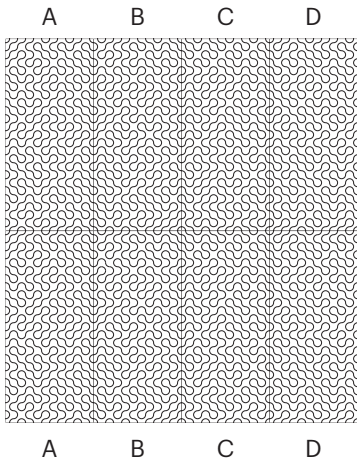
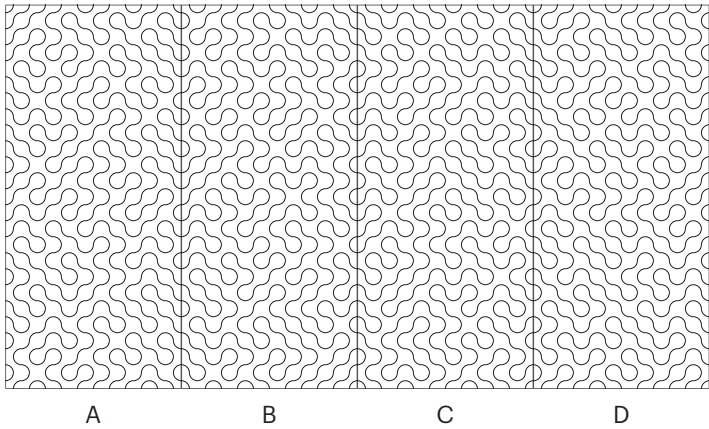
Product Description and Specifications

Available Patterns *cont...*

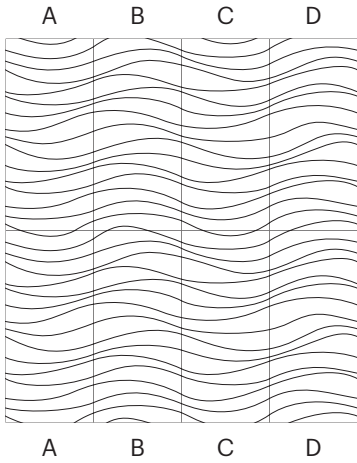
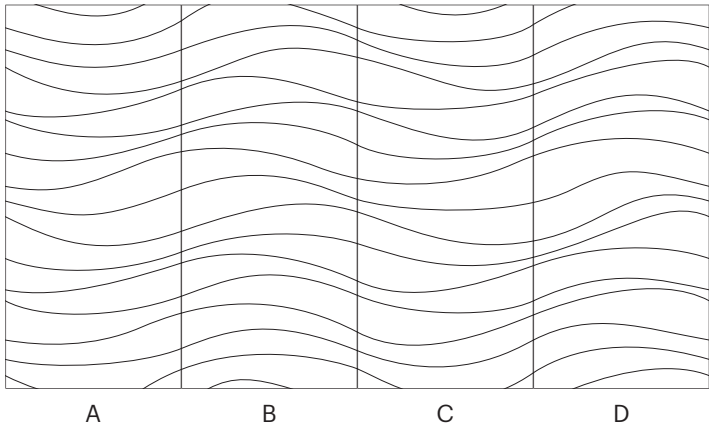
Leafy



Meander



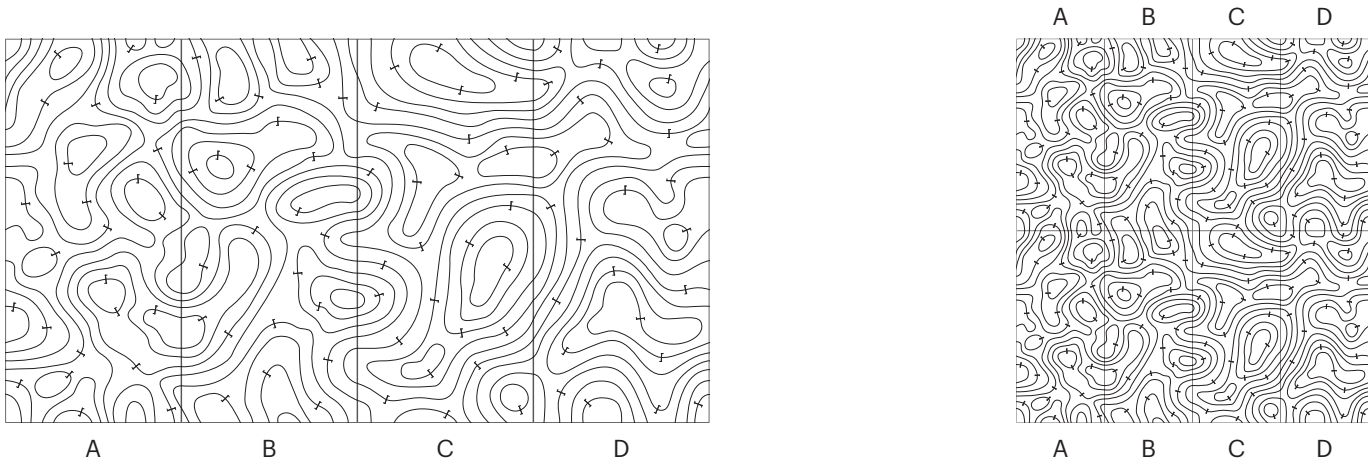
Swell



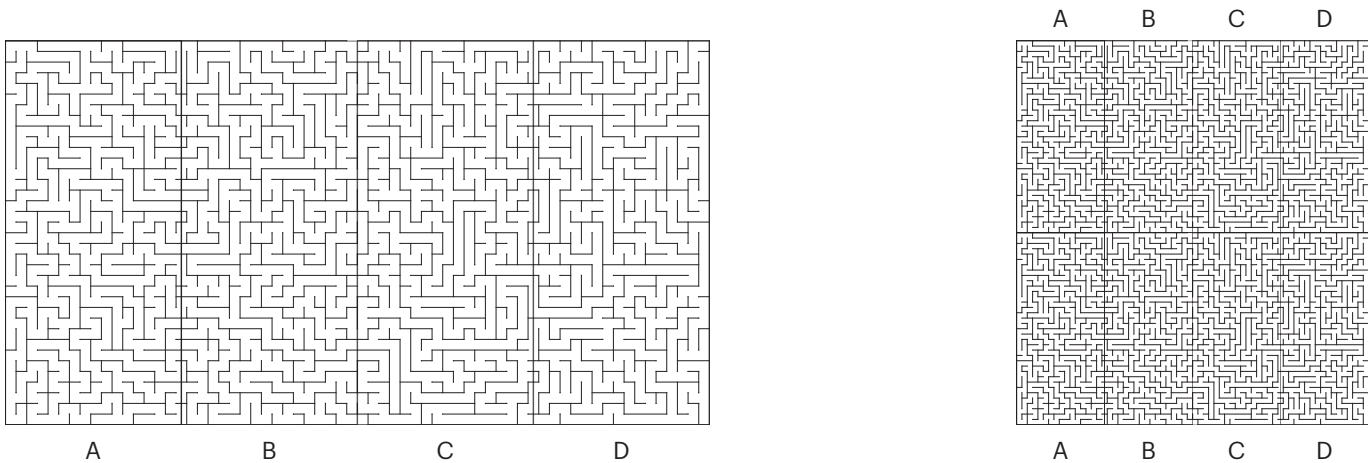
Product Description and Specifications

Available Patterns *cont...*

Terra



Twist



Vein

