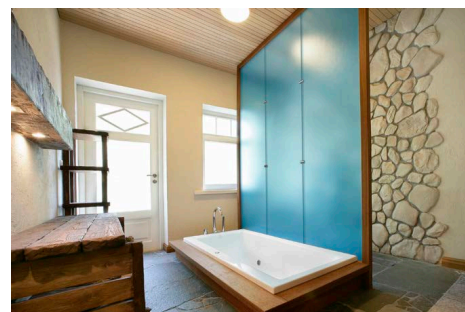
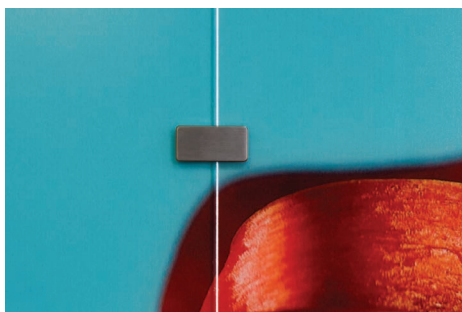
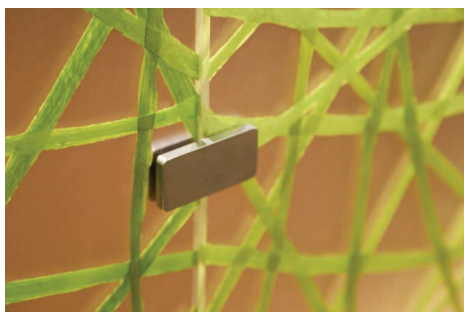




3form *Align* hardware allows you to create uniform, stunning applications with the different types and gauges of 3form material. This collection features two aesthetic options to be similar to *Suspend* and *Point Support* hardware from 3form. *Align* hardware also works alone to combine panels in many types of installations, creating endless application options for these beautiful materials.



For more information, please visit [3-form.com](https://www.3-form.com) or call 800.726.0126

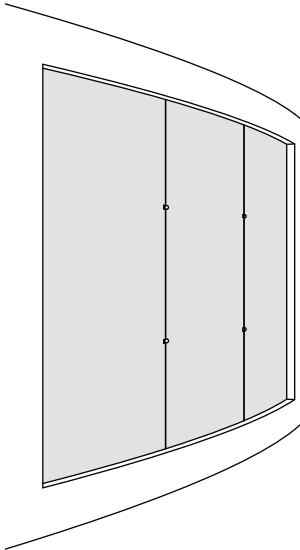
DEC 2023 | MAN-019 ALIGN | REV 005 © 2023 3form, Inc. All rights reserved.

Table of Contents

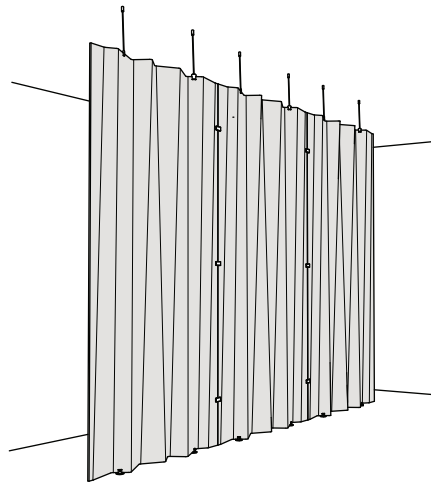
- 1 Application Overview**
- 3 Material Compatibility and Part Specifications**
- 4 Seams and Screw Cover**
- 5 Align Kit Overview**
- 6 Installation**
- 8 Solutions**
 - 8 Curved Walls
 - 9 Partitions
 - 10 Recessed Millwork
 - 11 Top Support
 - 12 Transition with Lighting
 - 13 Lightbox Partitions

Applications Align

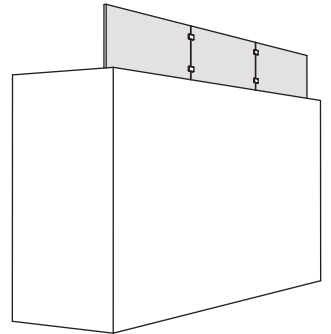
These simple components allow you to join panels together that are flat, have a radius, or have complex undulation with flat edges, as shown below.



Curved or Flat Walls



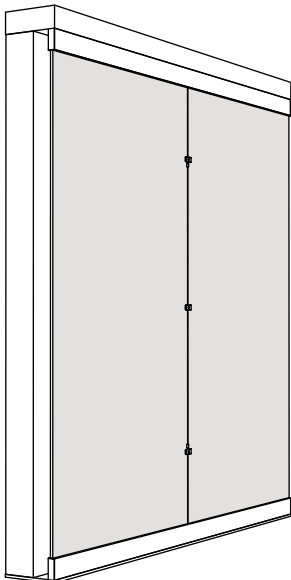
Vertical Partitions



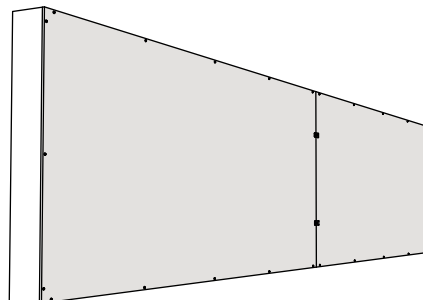
Recessed Millwork

Offset Align

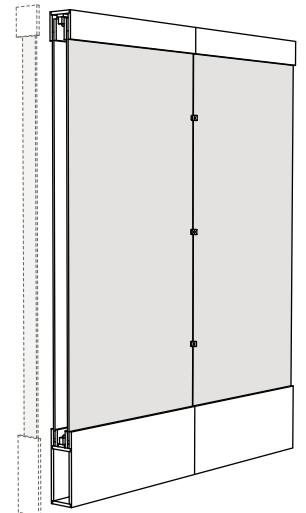
Designed for applications that require panel-to-panel alignment plus an additional rigid attachment to a wall (3-4" from the back of the panel). This hardware can be used with *Top Support*, *Transactions*, *Lightboxes* and other applications that require both panel alignment and rigidity that are close to a parallel wall.



Top Support



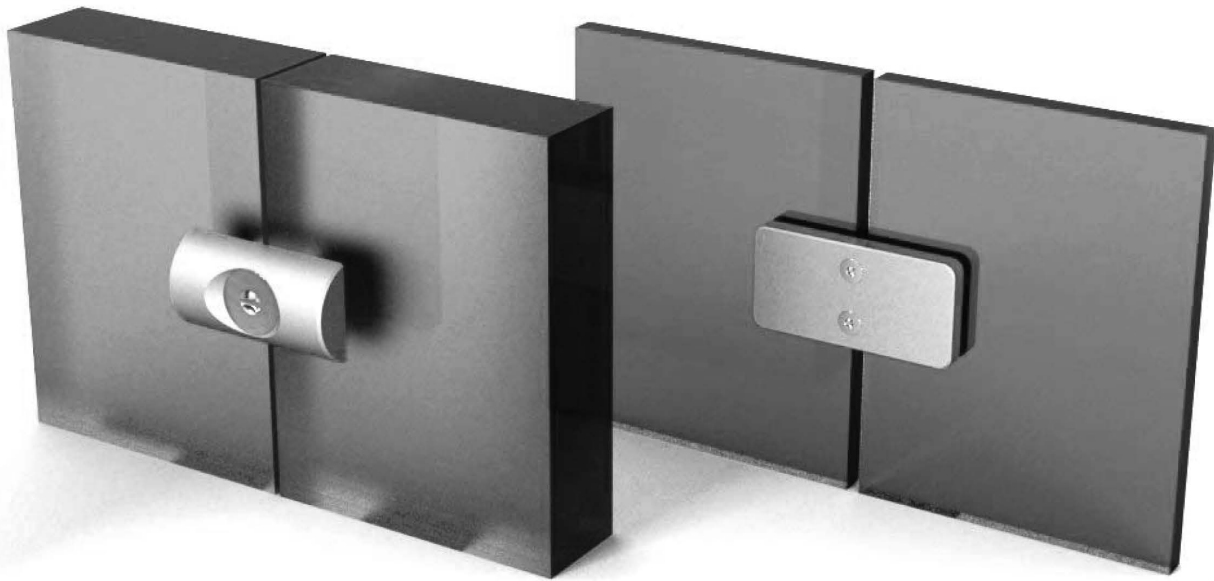
Transactions



Lightboxes

Overview Align

There are two different aesthetic options: *Align Curve* and *Align Smooth*. These allow you to use hardware that has a similar appearance to *Point Support* and *Suspend* hardware from 3form. There is also an optional, self-adhesive screw cover available for the *Smooth* collection that will conceal any exposed screws if desired.



Align Curve

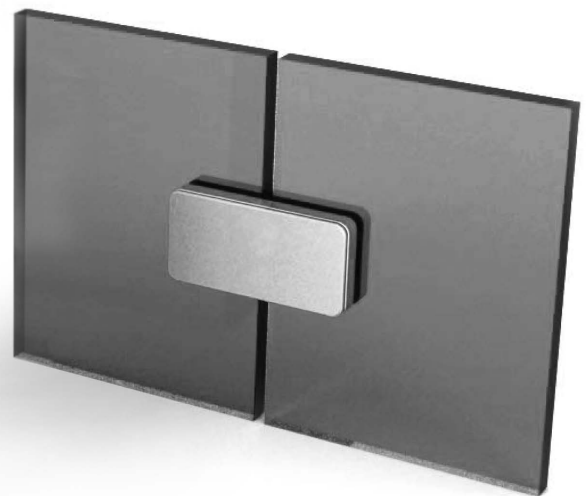
Align Smooth

Offset Align

Align Screw Cover



Offset Align



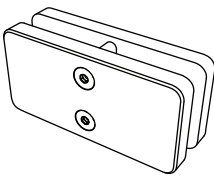
Align Screw Cover

Overview

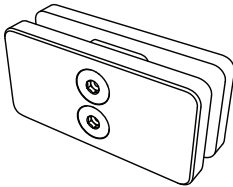
Material Compatibility and Part Specifications

The *Align* hardware options also accommodate different gauges and materials. Please use the matrix below to select the appropriate parts for the gauge of your material. See page 5 to find part numbers.

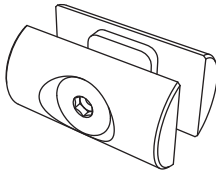
Material Types and Gauges	Align Smooth	Align Smooth Large	Align Curve	Offset Align
Varia	1/4", 3/8"	1/2", 3/4", 1"	1/2", 3/4", 1"	3/8", 1/2", 3/4", 1", 2"
Chroma	-	1/2", 1", 2"	1/2", 1", 2"	1/4", 1/2", 1", 2"



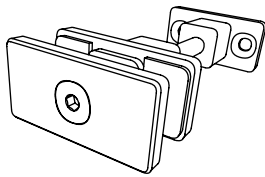
Align Smooth



Align Smooth Large



Align Curve



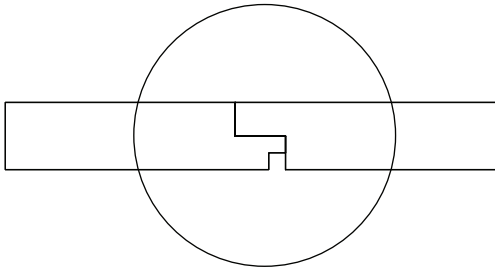
Offset Align

Align hardware also allows you to have a different reveal between panels. The only part that does not require fabrication is the *Align Smooth*, which, without fabrication of the panels, creates a 1/8" reveal between panels. Or, it can be fabricated to have a 1/16" reveal. The other hardware pieces, including *Offset Align*, require fabrication and can have a 1/16" reveal, or even no reveal with a loose seam, between panels.

Fabrication	Align Smooth	Align Smooth Large	Align Curve	Offset Align
With Fabrication				
Without Fabrication		N/A	N/A	N/A

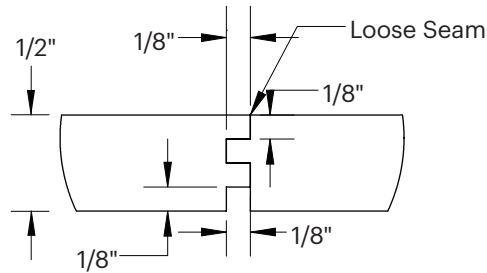
Overview Loose Seams

Loose seams are not glued and are primarily used when panels are backlit. 3form recommends using *Align* hardware with these loose seams.



Half Lap Quirk

Great accessibility for multiple panel installations.

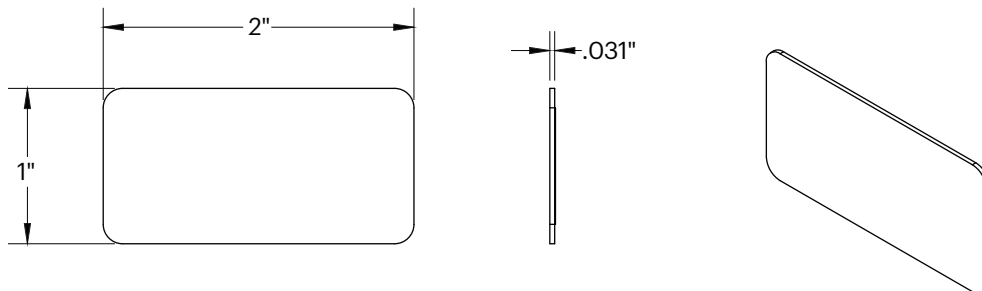


Tongue and Groove Quirk

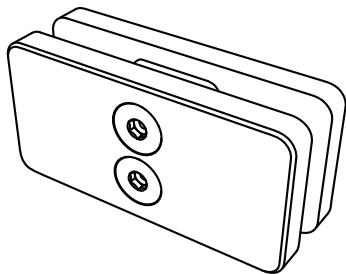
Best aesthetic loose seam, however accessibility is limited on larger installations.

Align Screw Cover

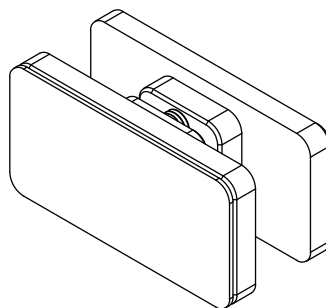
A stainless steel cover plate to hide any exposed screws can be purchased and easily adhered with supplied VHB tape to any *Align Smooth* or *Offset Align* hardware.



Align Screw Cover 3-15-0086



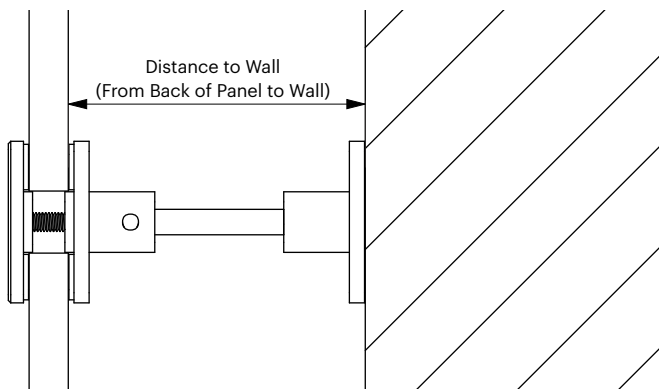
Align Smooth Large



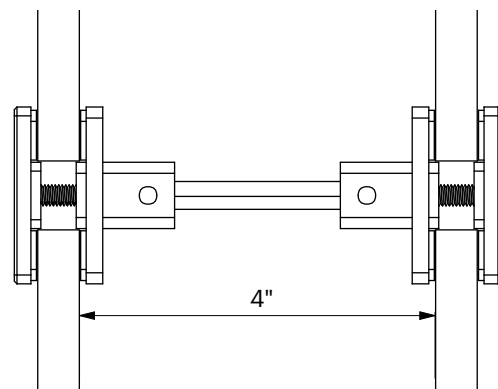
Align Screw Cover Attached to Face of Align Smooth Large

Overview Align Kit

Kit Number	Description	Gauge	Distance to Wall
3-15-0081-K	Align Smooth	¼"	-
3-15-0082-K	Align Smooth	⅜"	-
3-15-0071-K	Align Smooth Large	½"	-
3-15-0078-K	Align Smooth Large	¾"	-
3-15-0861-K	Align Smooth Large	1"	-
3-15-0080-K	Align Smooth Large	2"	-
3-15-0074-K	Align Curve	½"	-
3-15-0075-K	Align Curve	¾"	-
3-15-0070-K	Align Curve	1"	-
3-15-0076-K	Align Curve	2"	-
3-15-0621-K	Offset Align	⅜"	3¾" - 4½"
3-15-0622-K	Offset Align	½" - ⅝"	3¾" - 4½"
3-15-0623-K	Offset Align	⅝" - ¾"	3¾" - 4½"
3-15-0871-K	Offset Align	1"	3¾" - 4½"
3-15-0872-K	Offset Align	2"	3¾" - 4½"
3-15-3036-K	Offset Align (Specific to 600.06 RTG)	⅜"	4⅞"
3-15-0624-K	Double Sided Align (Specific to 200.19 RTG)	½"	4"
3-15-0086	Align Smooth Screw Cover	N/A	N/A



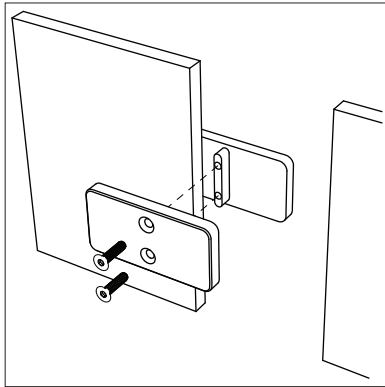
Offset Align Top View



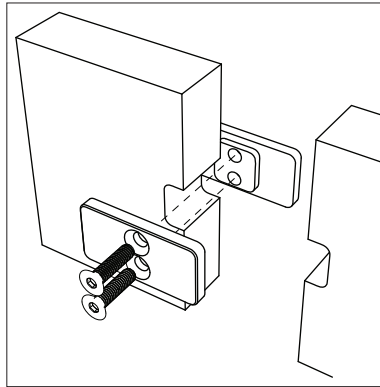
Double Sided Align Top View

Installation Align

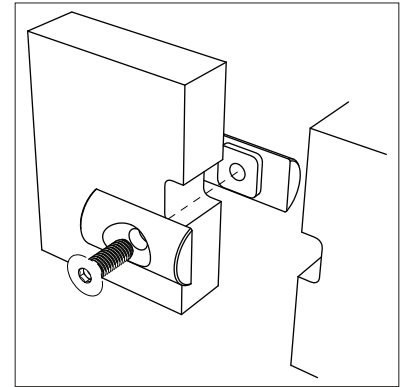
Installation of the hardware is shown below. If there is gauge variance from panel to panel use the self-adhesive silicon shims included to build up the thinner side. You can also use these silicon shims for increased grip on the material.



Align Smooth



Align Smooth Large



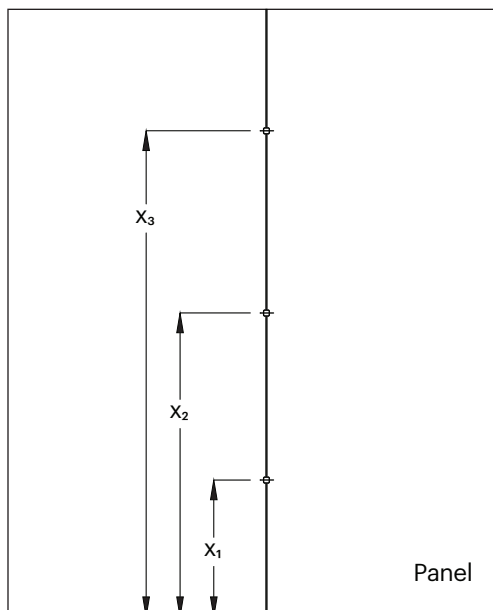
Align Curve

In general, panels should have 2 center attachment points in addition to being attached at the top and bottom of the panel. There are a variety of ways to attach at the top and bottom, as shown in the solutions on the following pages.

Offset Align

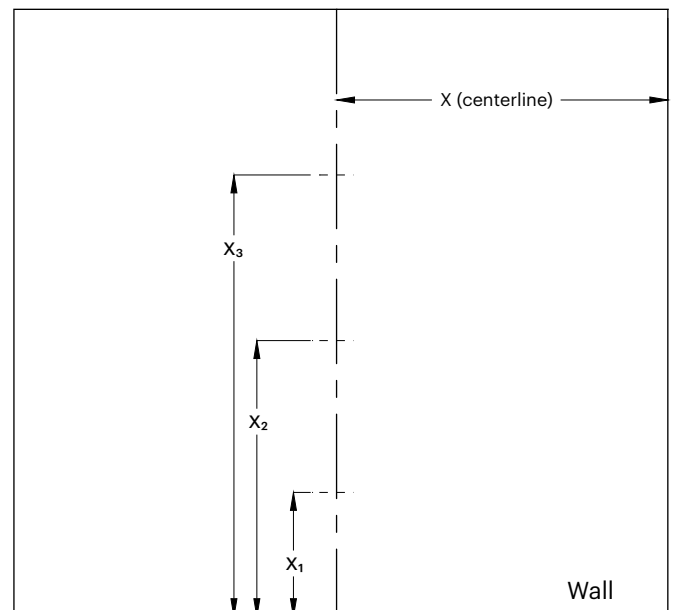
1

Lay out 3form resin panels and determine how and where they will be installed.



2

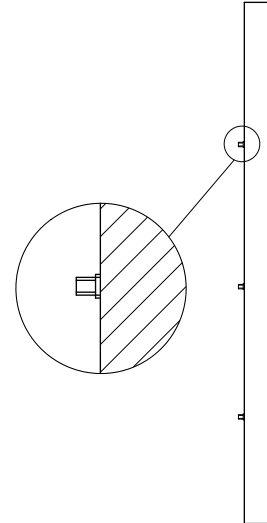
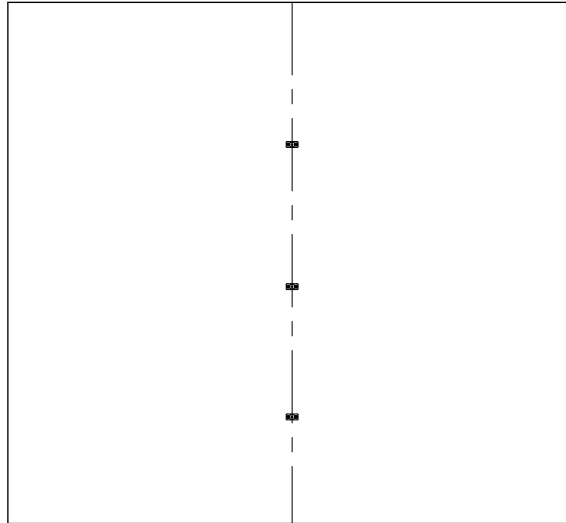
Determine center of each align clip based on placement of panels and mark the center line on the wall or back panel.



Installation Offset Align

3

Mount the back *Align Clip* to wall or panel ensuring it is fastened tight.

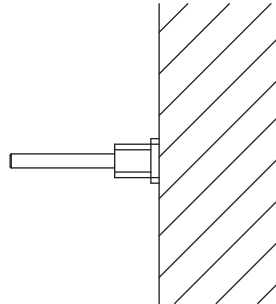


4

Determine the length of the all-thread rod needed by measuring from the wall to the back of the panel and cut down if necessary. The summary on page 5 of this document shows the range of the all-thread rod included with the kit. If the distance from the wall to the back of the panel is X, the all-thread rod length should be between (X - 0.25") and (X - 1"). If the included all-thread rod doesn't fall within this range, cut the all-thread rod accordingly.

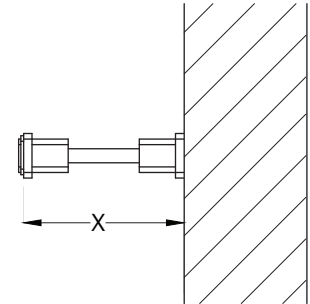
5

Screw the all-thread rod into the back *Align Clip*.



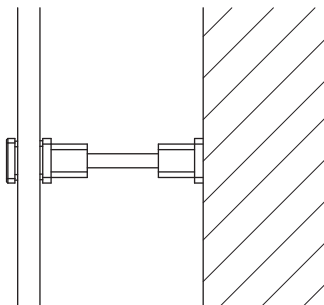
6

Screw the back portion of the front clip to the all-thread rod and adjust the length to the desired dimension.



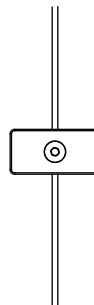
7

Install 3form panels in place and install the front portion of the *Align Clip* making sure the panel remains straight and flat.



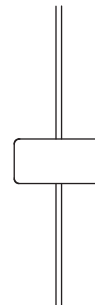
8

Make sure the front *Align Clip* is level and positioned properly.



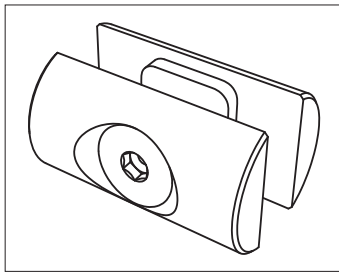
9

Attach the *Align Screw Cover* to finish the installation.

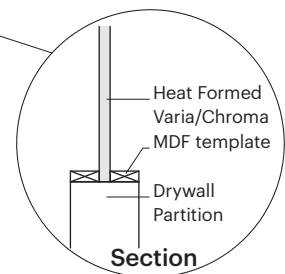
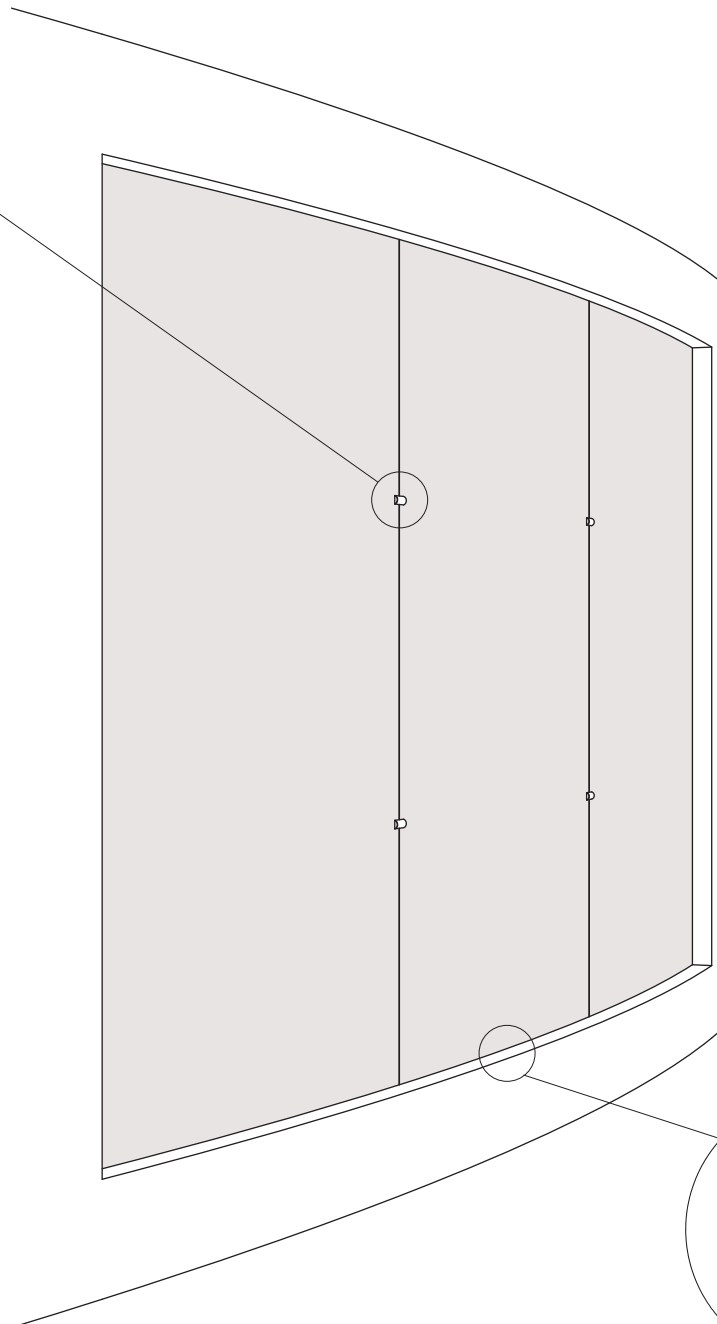


Solution 1 Curved Walls

There are various ways to capture panels at the top and bottom. In this solution the panels are captured in the space between an MDF template, but panels could be captured by a U-channel, cable hardware, thru-holes with standard bolts, etc. However, most resin materials are inherently flexible or have some gauge variance. The *Align* hardware is used to bring these panels together and

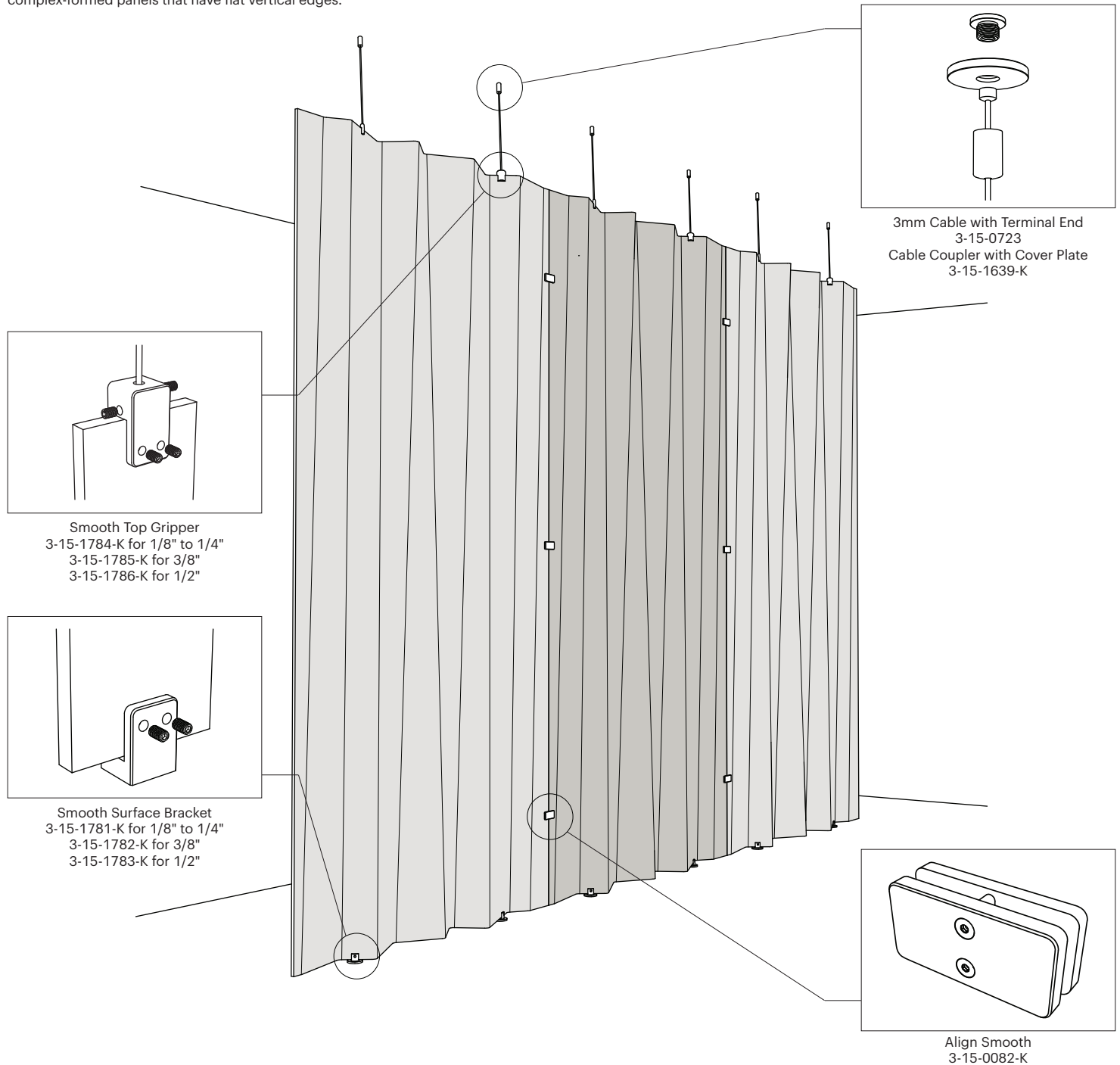


Align Curve
3-15-0074-K

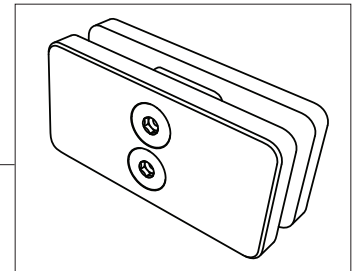
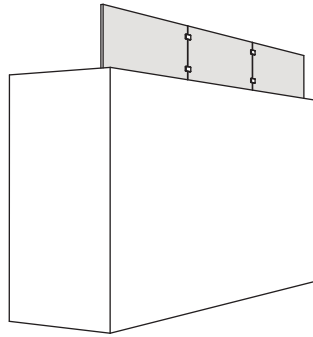


Solution 2 Partitions

Partitions can be created using cables or surface brackets at the top, and surface brackets at the bottom. This particular application uses *Top Grippers* on the top and *Fixed Surface Brackets* on the bottom with thru-holes to securely hold the panel. The panels are then joined with the *Align Smooth* hardware. This is done in this application with complex-formed panels that have flat vertical edges.



Solution 3 Recessed Millwork



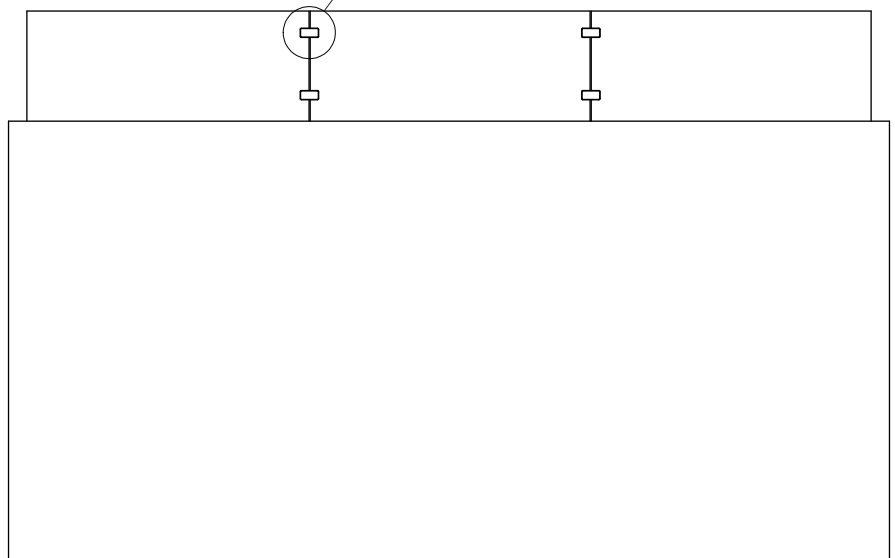
Align Smooth Large
3-15-0071-K

18" max panel height
above millwork
without further
hardware support

Cantilevered conditions
require a 'sandwiched and
thru-bolted mounting
condition' for stability

8" recess depth
in millwork

Section View

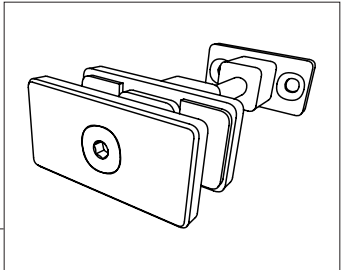
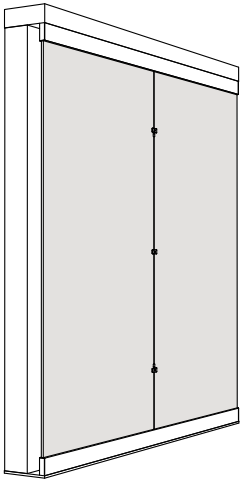


Overall View

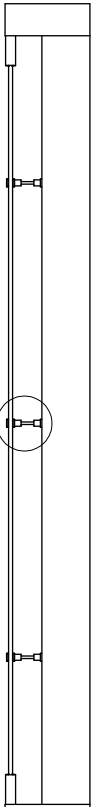
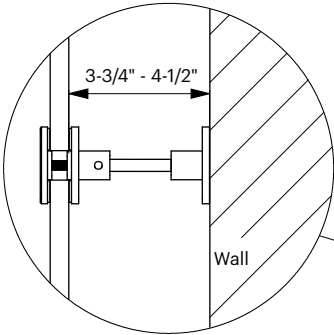


Top View

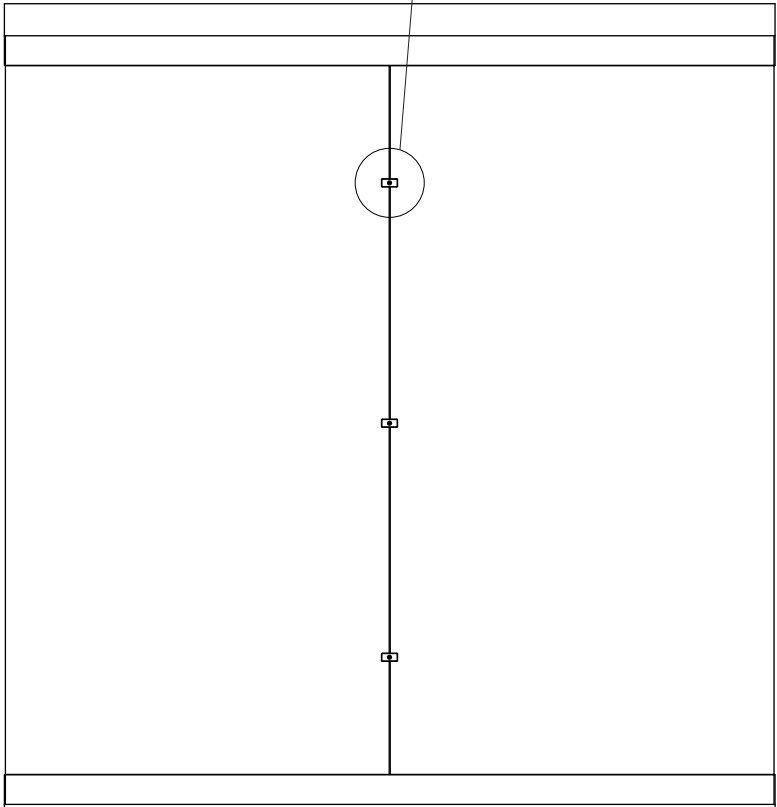
Solution 4
Top Support
(Close to a Wall)



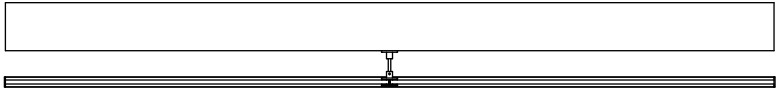
Offset Align
3-15-0622-K



Section View

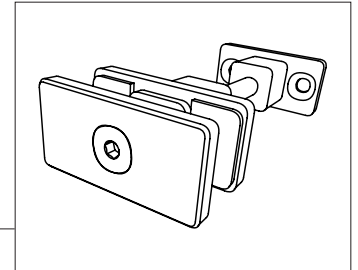
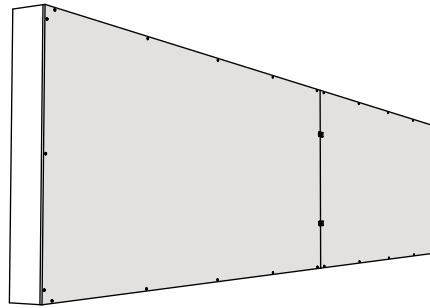


Overall View

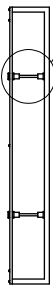
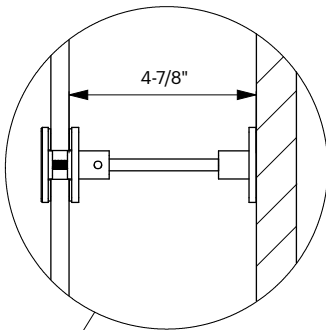


Top View

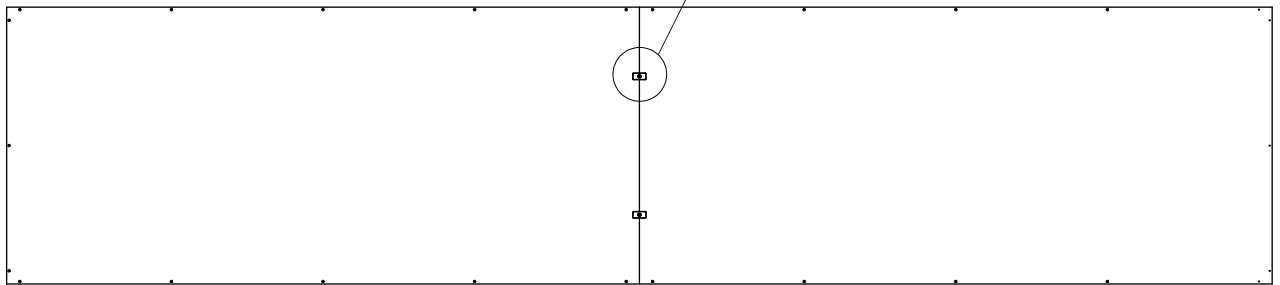
Solution 5
Transaction with Lighting
 600.06.01



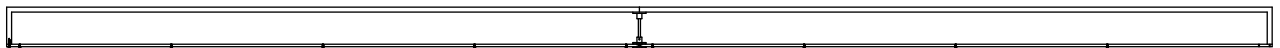
Offset Align
3-15-0622-K



Section View

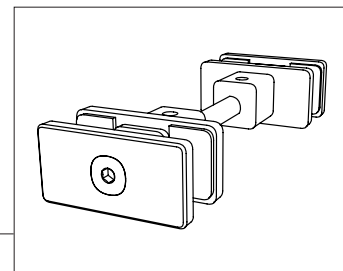
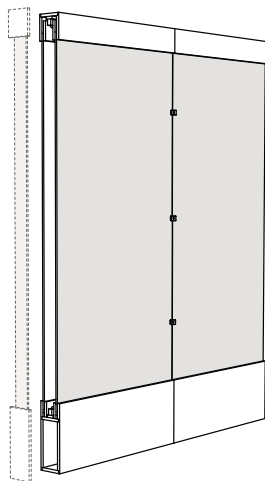


Overall View

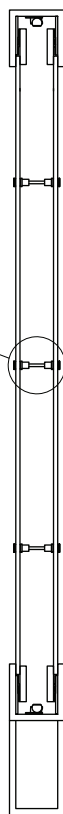
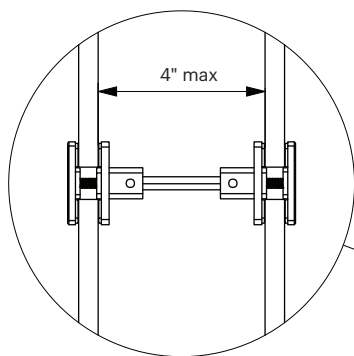


Top View

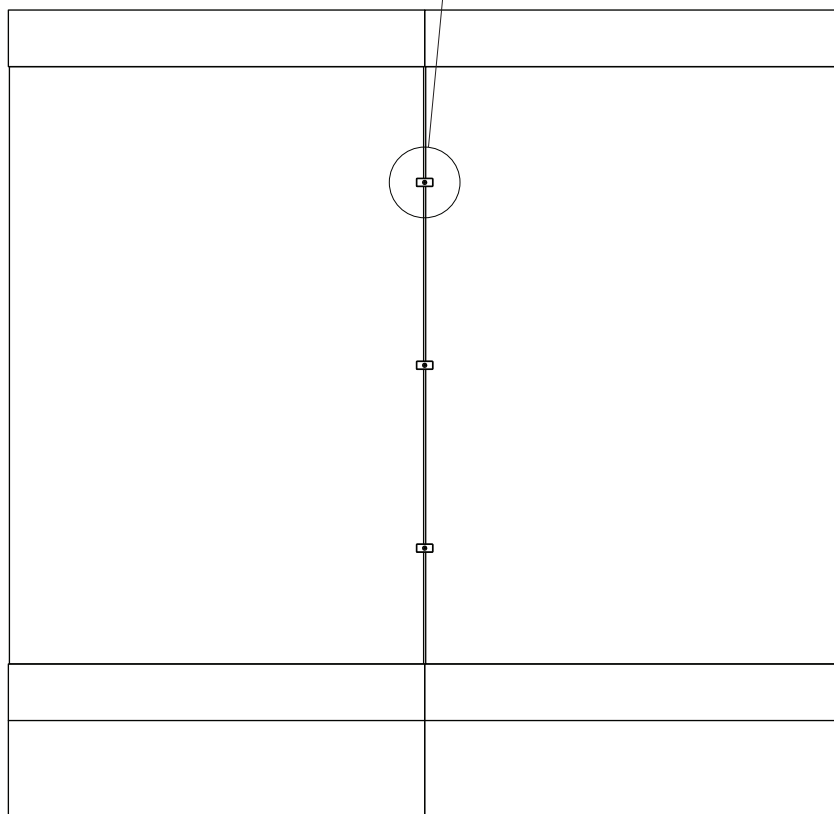
Solution 6 Lightbox Partitions 200.19 Series



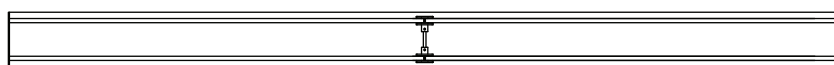
Double Sided Align
3-15-0624-K



Section View



Overall View



Top View